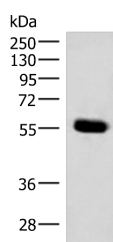


IPPK Polyclonal Antibody

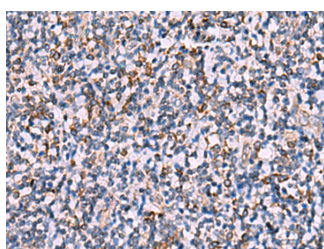
Catalog No.	E-AB-18125	Reactivity	H,M,R
Storage	Store at -20°C. Avoid freeze / thaw cycles.	Host	Rabbit
Applications	WB,IHC,ELISA	Isotype	IgG

Note: Centrifuge before opening to ensure complete recovery of vial contents.

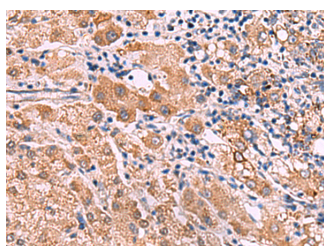
Images



Western blot analysis of Mouse pancreas tissue lysate using IPPK Polyclonal Antibody at dilution of 1:350



Immunohistochemistry of paraffin-embedded Human tonsil tissue using IPPK Polyclonal Antibody at dilution of 1:30(x200)



Immunohistochemistry of paraffin-embedded Human liver cancer tissue using IPPK Polyclonal Antibody at dilution of 1:30(x200)

Immunogen Information

Immunogen	Synthetic peptide of human IPPK
Gene Accession	NP073592
Swissprot	Q9H8X2
Synonyms	InsP5 2 kinase,InsP5 2-kinase,INSP5K2,IP5K,IPK1,IPK1 homolog,IPPK,IPPK

Product Information

Calculated MW	56 kDa
Observed MW	Refer to figures
Buffer	PBS with 0.05% NaN ₃ and 40% Glycerol,pH7.4
Purify	Antigen affinity purification
Dilution	WB 1:500-1:2000, IHC 1:30-1:150, ELISA 1:5000-1:10000

Background

The protein encoded by this gene is a kinase that phosphorylates position 2 of inositol-1,3,4,5,6-pentakisphosphate to form inositol-1,2,3,4,5,6-hexakisphosphate (InsP6). InsP6 has a variety of functions, including stimulation of DNA repair, endocytosis, and mRNA export.

For Research Use Only

Thank you for your recent purchase.
 If you would like to learn more about antibodies, please visit www.elabscience.com.

**Focus on your research
 Service for life science**

Applications:WB-Western Blot IHC-Immunohistochemistry IF-Immunofluorescence IP-Immunoprecipitation FC-Flow cytometry ChIP-Chromatin Immunoprecipitation Reactivity: H-Human R-Rat M-Mouse Mk-Monkey Dg-Dog Ch-Chicken Hm-Hamster Rb-Rabbit Sh-Sheep Pg-Pig Z-Zebrafish X-Xenopus C-Cow.