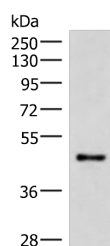


## IRX2 Polyclonal Antibody

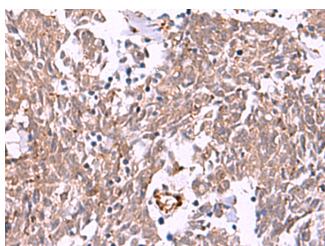
<b>Catalog No.</b>	E-AB-18130	<b>Reactivity</b>	H,M
<b>Storage</b>	Store at -20°C. Avoid freeze / thaw cycles.	<b>Host</b>	Rabbit
<b>Applications</b>	WB,IHC,ELISA	<b>Isotype</b>	IgG

**Note:** Centrifuge before opening to ensure complete recovery of vial contents.

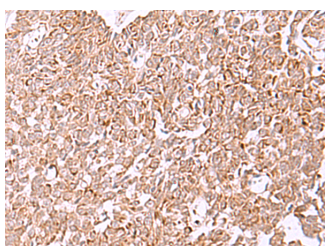
### Images



Western blot analysis of Mouse lung tissue lysate using IRX2 Polyclonal Antibody at dilution of 1:300



Immunohistochemistry of paraffin-embedded Human lung cancer tissue using IRX2 Polyclonal Antibody at dilution of 1:45(x200)



Immunohistochemistry of paraffin-embedded Human ovarian cancer tissue using IRX2 Polyclonal Antibody at dilution of 1:45(x200)

### Immunogen Information

<b>Immunogen</b>	Synthetic peptide of human IRX2
<b>Gene Accession</b>	NP150366
<b>Swissprot</b>	Q9BZI1
<b>Synonyms</b>	Homeodomain protein IRXA2,Iroquois homeobox 2,Iroquois homeobox protein 2,Iroquois-class homeodomain protein irx-2,IRX 2,irx2,IRX2,IrxA2

### Product Information

<b>Calculated MW</b>	49 kDa
<b>Observed MW</b>	Refer to figures
<b>Buffer</b>	PBS with 0.05% NaN <sub>3</sub> and 40% Glycerol,pH7.4
<b>Purify</b>	Antigen affinity purification
<b>Dilution</b>	WB 1:500-1:2000, IHC 1:40-1:200, ELISA 1:5000-1:10000

### Background

IRX2 is a member of the Iroquois homeobox gene family. Members of this family appear to play multiple roles during pattern formation of vertebrate embryos. IRX2 (Iroquois Homeobox 2) is a Protein Coding gene. Diseases associated with IRX2 include Kidney Clear Cell Sarcoma. GO annotations related to this gene include sequence-specific DNA binding. An important paralog of this gene is IRX5.

#### For Research Use Only

Thank you for your recent purchase.  
 If you would like to learn more about antibodies, please visit [www.elabscience.com](http://www.elabscience.com).

**Focus on your research  
 Service for life science**

Applications:WB-Western Blot IHC-Immunohistochemistry IF-Immunofluorescence IP-Immunoprecipitation FC-Flow cytometry ChIP-Chromatin Immunoprecipitation Reactivity: H-Human R-Rat M-Mouse Mk-Monkey Dg-Dog Ch-Chicken Hm-Hamster Rb-Rabbit Sh-Sheep Pg-Pig Z-Zebrafish X-Xenopus C-Cow.