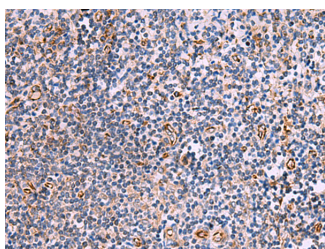


ITGA11 Polyclonal Antibody

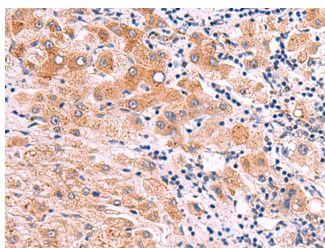
Catalog No.	E-AB-18136	Reactivity	H
Storage	Store at -20°C. Avoid freeze / thaw cycles.	Host	Rabbit
Applications	IHC,ELISA	Isotype	IgG

Note: Centrifuge before opening to ensure complete recovery of vial contents.

Images



Immunohistochemistry of paraffin-embedded Human tonsil tissue using ITGA11 Polyclonal Antibody at dilution of 1:75(×200)



Immunohistochemistry of paraffin-embedded Human liver cancer tissue using ITGA11 Polyclonal Antibody at dilution of 1:75(×200)

Immunogen Information

Immunogen	Synthetic peptide of human ITGA11
Gene Accession	NP001004439
Swissprot	Q9UKX5
Synonyms	Integrin Subunit Alpha 11, Integrin, Alpha 11, Integrin Alpha-11, HsT18964.

Product Information

Buffer	PBS with 0.05% NaN3 and 40% Glycerol, pH7.4
Purify	Antigen affinity purification
Dilution	IHC 1:50-1:300, ELISA 1:5000-1:10000

Background

This gene encodes an alpha integrin. Integrins are heterodimeric integral membrane proteins composed of an alpha chain and a beta chain. This protein contains an I domain, is expressed in muscle tissue, dimerizes with beta 1 integrin in vitro, and appears to bind collagen in this form. Therefore, the protein may be involved in attaching muscle tissue to the extracellular matrix. Alternative transcriptional splice variants have been found for this gene, but their biological validity is not determined.

For Research Use Only

Thank you for your recent purchase.
 If you would like to learn more about antibodies, please visit www.elabscience.com.

**Focus on your research
 Service for life science**

Applications: WB-Western Blot IHC-Immunohistochemistry IF-Immunofluorescence IP-Immunoprecipitation FC-Flow cytometry ChIP-Chromatin Immunoprecipitation Reactivity: H-Human R-Rat M-Mouse Mk-Monkey Dg-Dog Ch-Chicken Hm-Hamster Rb-Rabbit Sh-Sheep Pg-Pig Z-Zebrafish X-Xenopus C-Cow.