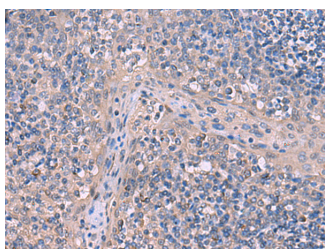


## ITPR2 Polyclonal Antibody

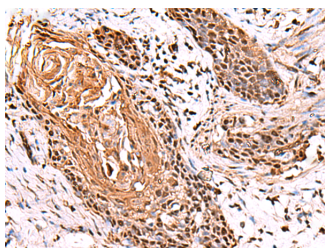
<b>Catalog No.</b>	E-AB-18139	<b>Reactivity</b>	H,M,R
<b>Storage</b>	Store at -20°C. Avoid freeze / thaw cycles.	<b>Host</b>	Rabbit
<b>Applications</b>	IHC,ELISA	<b>Isotype</b>	IgG

**Note:** Centrifuge before opening to ensure complete recovery of vial contents.

### Images



Immunohistochemistry of paraffin-embedded Human tonsil tissue using ITPR2 Polyclonal Antibody at dilution of 1:65(×200)



Immunohistochemistry of paraffin-embedded Human esophagus cancer tissue using ITPR2 Polyclonal Antibody at dilution of 1:65(×200)

### Immunogen Information

<b>Immunogen</b>	Synthetic peptide of human ITPR2
<b>Gene Accession</b>	NP002214
<b>Swissprot</b>	Q14571
<b>Synonyms</b>	InsP3 R2,InsP3R2,IP3 R2,IP3 receptor,IP3R 2,IP3R2,ITPR 2,Itpr2,ITPR2

### Product Information

<b>Buffer</b>	PBS with 0.05% NaN <sub>3</sub> and 40% Glycerol,pH7.4
<b>Purify</b>	Antigen affinity purification
<b>Dilution</b>	IHC 1:50-1:300, ELISA 1:5000-1:10000

### Background

Inositol 1,4,5-triphosphate (IP3) functions as a second messenger for a myriad of extracellular stimuli including hormones, growth factors and neurotransmitters. Receptor tyrosine kinases indirectly increase the intracellular levels of IP3 through the activation of phospholipases such as phospholipase C (PLC), which convert phosphatidylinositol-4,5 bisphosphate into IP3 and diacylglycerol (DAG). The inositol 1,4,5-triphosphate receptor, IP3R, acts as an inositol triphosphate (IP3)-gated calcium release channel in a variety of cell types. Three IP3 receptor subtypes have been described and are designated IP3R-I, IP3R-II and IP3R-III. IP3R-I is the predominant IP3R subtype expressed in neuronal tissues and the central nervous system, but is also expressed at high levels in the liver.

#### For Research Use Only

Thank you for your recent purchase.  
 If you would like to learn more about antibodies, please visit [www.elabscience.com](http://www.elabscience.com).

**Focus on your research  
 Service for life science**

Applications:WB-Western Blot IHC-Immunohistochemistry IF-Immunofluorescence IP-Immunoprecipitation FC-Flow cytometry ChIP-Chromatin Immunoprecipitation Reactivity: H-Human R-Rat M-Mouse Mk-Monkey Dg-Dog Ch-Chicken Hm-Hamster Rb-Rabbit Sh-Sheep Pg-Pig Z-Zebrafish X-Xenopus C-Cow.