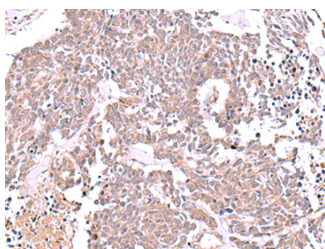


JDP2 Polyclonal Antibody

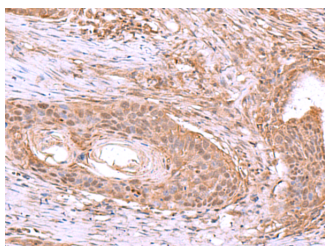
Catalog No.	E-AB-18141	Reactivity	H,M,R
Storage	Store at -20°C. Avoid freeze / thaw cycles.	Host	Rabbit
Applications	IHC,ELISA	Isotype	IgG

Note: Centrifuge before opening to ensure complete recovery of vial contents.

Images



Immunohistochemistry of paraffin-embedded Human lung cancer tissue using JDP2 Polyclonal Antibody at dilution of 1:40(×200)



Immunohistochemistry of paraffin-embedded Human esophagus cancer tissue using JDP2 Polyclonal Antibody at dilution of 1:40(×200)

Immunogen Information

Immunogen	Synthetic peptide of human JDP2
Gene Accession	NP569736
Swissprot	Q8WYK2
Synonyms	Jdp2,JDP2,Jun dimerization protein 2,JUNDM2,Progesterone receptor co-activator

Product Information

Buffer	PBS with 0.05% NaN ₃ and 40% Glycerol,pH7.4
Purify	Antigen affinity purification
Dilution	IHC 1:40-1:200, ELISA 1:5000-1:10000

Background

JDP2 (Jun Dimerization Protein 2) is a Protein Coding gene. Diseases associated with JDP2 include Keratitis and Skeletal Muscle Cancer. Among its related pathways are Tacrolimus/Cyclosporine Pathway, Pharmacodynamics and ATF-2 transcription factor network. GO annotations related to this gene include transcription factor activity, sequence-specific DNA binding and protein heterodimerization activity. An important paralog of this gene is ATF3.

For Research Use Only

Thank you for your recent purchase.
 If you would like to learn more about antibodies, please visit www.elabscience.com.

**Focus on your research
 Service for life science**

Applications:WB-Western Blot IHC-Immunohistochemistry IF-Immunofluorescence IP-Immunoprecipitation FC-Flow cytometry ChIP-Chromatin Immunoprecipitation Reactivity: H-Human R-Rat M-Mouse Mk-Monkey Dg-Dog Ch-Chicken Hm-Hamster Rb-Rabbit Sh-Sheep Pg-Pig Z-Zebrafish X-Xenopus C-Cow.