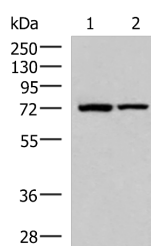


JPH1 Polyclonal Antibody

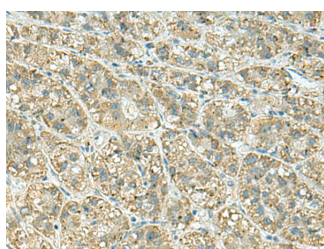
Catalog No.	E-AB-18143	Reactivity	H,M
Storage	Store at -20°C. Avoid freeze / thaw cycles.	Host	Rabbit
Applications	WB,IHC,ELISA	Isotype	IgG

Note: Centrifuge before opening to ensure complete recovery of vial contents.

Images



Western blot analysis of Mouse heart tissue and Mouse skeletal muscle tissue lysates using JPH1 Polyclonal Antibody at dilution of 1:800



Immunohistochemistry of paraffin-embedded Human liver cancer tissue using JPH1 Polyclonal Antibody at dilution of 1:30(×200)

Immunogen Information

Immunogen	Synthetic peptide of human JPH1
Gene Accession	NP065698
Swissprot	Q9HDC5
Synonyms	DKFZp762L0313,JP 1,JP-1,JP1,JPH1,JPH1,Junctophilin 1,Junctophilin type 1

Product Information

Calculated MW	72 kDa
Observed MW	Refer to figures
Buffer	PBS with 0.05% NaN ₃ and 40% Glycerol,pH7.4
Purify	Antigen affinity purification
Dilution	WB 1:1000-1:5000, IHC 1:30-1:150, ELISA 1:5000-1:10000

Background

Junctional complexes between the plasma membrane and endoplasmic/sarcoplasmic reticulum are a common feature of all excitable cell types and mediate cross talk between cell surface and intracellular ion channels. The protein encoded by this gene is a component of junctional complexes and is composed of a C-terminal hydrophobic segment spanning the endoplasmic/sarcoplasmic reticulum membrane and a remaining cytoplasmic domain that shows specific affinity for the plasma membrane. This gene is a member of the junctophilin gene family.

For Research Use Only

Thank you for your recent purchase.
 If you would like to learn more about antibodies, please visit www.elabscience.com.

**Focus on your research
 Service for life science**

Applications:WB-Western Blot IHC-Immunohistochemistry IF-Immunofluorescence IP-Immunoprecipitation FC-Flow cytometry ChIP-Chromatin Immunoprecipitation Reactivity: H-Human R-Rat M-Mouse Mk-Monkey Dg-Dog Ch-Chicken Hm-Hamster Rb-Rabbit Sh-Sheep Pg-Pig Z-Zebrafish X-Xenopus C-Cow.