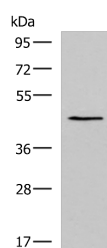


KCNK18 Polyclonal Antibody

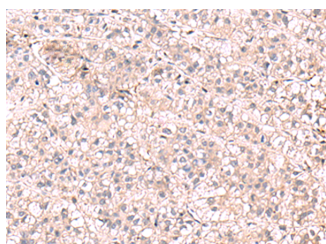
Catalog No.	E-AB-18168	Reactivity	H,M
Storage	Store at -20°C. Avoid freeze / thaw cycles.	Host	Rabbit
Applications	WB,IHC,ELISA	Isotype	IgG

Note: Centrifuge before opening to ensure complete recovery of vial contents.

Images



Western blot analysis of TM4 cell lysate using KCNK18 Polyclonal Antibody at dilution of 1:800



Immunohistochemistry of paraffin-embedded Human liver cancer tissue using KCNK18 Polyclonal Antibody at dilution of 1:75(x200)

Immunogen Information

Immunogen	Synthetic peptide of human KCNK18
Gene Accession	NP862823
Swissprot	Q7Z418
Synonyms	KCNK18,KCNKI,MGR13,TRESK 2,TRESK,TRESK2,TRIK,TWIK related individual K+ channel

Product Information

Calculated MW	44 kDa
Observed MW	Refer to figures
Buffer	PBS with 0.05% NaN ₃ and 40% Glycerol,pH7.4
Purify	Antigen affinity purification
Dilution	WB 1:500-1:2000, IHC 1:70-1:350, ELISA 1:5000-1:10000

Background

Potassium channels play a role in many cellular processes including maintenance of the action potential, muscle contraction, hormone secretion, osmotic regulation, and ion flow. This gene encodes a member of the superfamily of potassium channel proteins containing two pore-forming P domains and the encoded protein functions as an outward rectifying potassium channel. A mutation in this gene has been found to be associated with migraine with aura.

For Research Use Only

Thank you for your recent purchase.
 If you would like to learn more about antibodies, please visit www.elabscience.com.

**Focus on your research
 Service for life science**

Applications:WB-Western Blot IHC-Immunohistochemistry IF-Immunofluorescence IP-Immunoprecipitation FC-Flow cytometry ChIP-Chromatin Immunoprecipitation Reactivity: H-Human R-Rat M-Mouse Mk-Monkey Dg-Dog Ch-Chicken Hm-Hamster Rb-Rabbit Sh-Sheep Pg-Pig Z-Zebrafish X-Xenopus C-Cow.