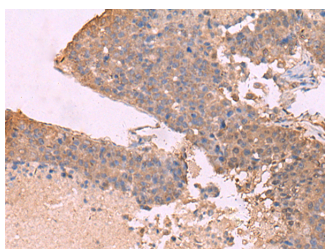


## KCNU1 Polyclonal Antibody

<b>Catalog No.</b>	E-AB-18173	<b>Reactivity</b>	H
<b>Storage</b>	Store at -20°C. Avoid freeze / thaw cycles.	<b>Host</b>	Rabbit
<b>Applications</b>	IHC,ELISA	<b>Isotype</b>	IgG

**Note:** Centrifuge before opening to ensure complete recovery of vial contents.

### Images



Immunohistochemistry of paraffin-embedded Human liver cancer tissue using KCNU1 Polyclonal Antibody at dilution of 1:45(×200)

### Immunogen Information

<b>Immunogen</b>	Synthetic peptide of human KCNU1
<b>Gene Accession</b>	NP001027006
<b>Swissprot</b>	A8MYU2
<b>Synonyms</b>	Potassium Channel Subfamily U Member 1,KCNMC1,Calcium-Activated Potassium Channel Subunit Alpha-3,SLO3,KCNMA3,KCa5

### Product Information

<b>Buffer</b>	PBS with 0.05% NaN3 and 40% Glycerol,pH7.4
<b>Purify</b>	Antigen affinity purification
<b>Dilution</b>	IHC 1:50-1:300, ELISA 1:5000-1:10000

### Background

This gene encodes a member of the potassium channel family of proteins. The encoded voltage-gated ion channel allows the outward flow of potassium ions during plasma membrane hyperpolarization in sperm. Opening of this channel may be regulated by calcium ion levels. Homozygous knockout mice that lack the related mouse gene exhibit male sterility. Alternative splicing results in multiple transcript variants.

#### For Research Use Only

Thank you for your recent purchase.  
 If you would like to learn more about antibodies, please visit [www.elabscience.com](http://www.elabscience.com).

**Focus on your research  
 Service for life science**

Applications:WB-Western Blot IHC-Immunohistochemistry IF-Immunofluorescence IP-Immunoprecipitation FC-Flow cytometry ChIP-Chromatin Immunoprecipitation Reactivity: H-Human R-Rat M-Mouse Mk-Monkey Dg-Dog Ch-Chicken Hm-Hamster Rb-Rabbit Sh-Sheep Pg-Pig Z-Zebrafish X-Xenopus C-Cow.