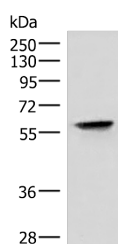


## VIM Polyclonal Antibody

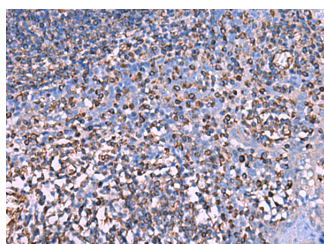
<b>Catalog No.</b>	E-AB-18212	<b>Reactivity</b>	H,M,R
<b>Storage</b>	Store at -20°C. Avoid freeze / thaw cycles.	<b>Host</b>	Rabbit
<b>Applications</b>	WB,IHC,ELISA	<b>Isotype</b>	IgG

**Note:** Centrifuge before opening to ensure complete recovery of vial contents.

### Images



Western blot analysis of HeLa cell lysate using VIM Polyclonal Antibody at dilution of 1:4000



Immunohistochemistry of paraffin-embedded Human tonsil tissue using VIM Polyclonal Antibody at dilution of 1:60(x200)

### Immunogen Information

<b>Immunogen</b>	Fusion protein of human VIM
<b>Gene Accession</b>	BC000163
<b>Swissprot</b>	P08670
<b>Synonyms</b>	CTRCT30,Epididymis luminal protein 113,FLJ36605,HEL113,VIM,VIME,Vimentin

### Product Information

<b>Calculated MW</b>	54 kDa
<b>Observed MW</b>	Refer to figures
<b>Buffer</b>	PBS with 0.05% NaN <sub>3</sub> and 40% Glycerol,pH7.4
<b>Purify</b>	Antigen affinity purification
<b>Dilution</b>	WB 1:2000-1:5000, IHC 1:50-1:300, ELISA 1:5000-1:10000

### Background

Vimentin,also named as VIM,belongs to the intermediate filament family. Vimentin is class-III intermediate filaments found in various non-epithelial cells,especially mesenchymal cells. Vimentin is important for stabilizing the architecture of the cytoplasm. Monocyte-derived macrophages secrete vimentin into the extracellular space in vitro. Secretion of vimentin was enhanced by the proinflammatory cytokine tumor necrosis factor-alpha (TNFA; 191160) and inhibited by the antiinflammatory cytokine IL10 (124092),suggesting that vimentin is involved in the immune response. Vimentin has specialized functions that contribute to specific dynamic cellular processes. As a phosphoprotein,55-60 kDa of vimentin proteins can be observed due to the different phosphorylation level.

#### For Research Use Only

Thank you for your recent purchase.  
 If you would like to learn more about antibodies,please visit [www.elabscience.com](http://www.elabscience.com).

**Focus on your research**  
**Service for life science**

Applications:WB-Western Blot IHC-Immunohistochemistry IF-Immunofluorescence IP-Immunoprecipitation FC-Flow cytometry ChIP-Chromatin Immunoprecipitation Reactivity: H-Human R-Rat M-Mouse Mk-Monkey Dg-Dog Ch-Chicken Hm-Hamster Rb-Rabbit Sh-Sheep Pg-Pig Z-Zebrafish X-Xenopus C-Cow.