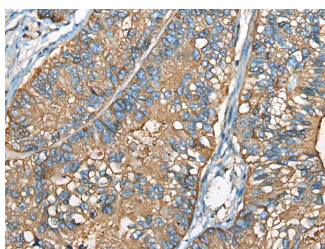


CEACAM8 Polyclonal Antibody

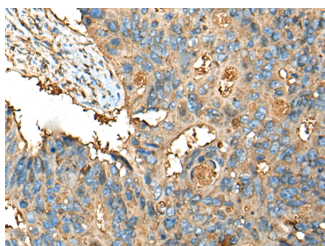
Catalog No.	E-AB-18217	Reactivity	H
Storage	Store at -20°C. Avoid freeze / thaw cycles.	Host	Rabbit
Applications	IHC,ELISA	Isotype	IgG

Note: Centrifuge before opening to ensure complete recovery of vial contents.

Images



Immunohistochemistry of paraffin-embedded Human gastric cancer tissue using CEACAM8 Polyclonal Antibody at dilution of 1:30(×200)



Immunohistochemistry of paraffin-embedded Human colorectal cancer tissue using CEACAM8 Polyclonal Antibody at dilution of 1:30(×200)

Immunogen Information

Immunogen	Fusion protein of human CEACAM8
Gene Accession	BC026263
Swissprot	P31997
Synonyms	CD 66b,CD 67,CD66b,CD67,CD67 antigen,CEACAM 8,CEACAM8,CEAM8,CGM 6,CGM6,NCA 95,NCA95

Product Information

Buffer	PBS with 0.05% NaN ₃ and 40% Glycerol,pH7.4
Purify	Antigen affinity purification
Dilution	IHC 1:30-1:150, ELISA 1:5000-1:10000

Background

Carcinoembryonic antigen-related cell adhesion molecule 8 (CEACAM8) also known as CD66b (Cluster of Differentiation 66b), is a human gene. In neutrophils, the CEACAM8 gene is primarily detected in the secondary granules within the cytoplasm, but it can also be found in lower amounts on the plasma membrane. The amount of CD67 on the plasma membrane is up-regulated upon granulocyte activation. CD67 has been located on the surface of neutrophilic and eosinophilic granulocytes at late stages of differentiation.

For Research Use Only

Thank you for your recent purchase.
 If you would like to learn more about antibodies, please visit www.elabscience.com.

**Focus on your research
 Service for life science**

Applications:WB-Western Blot IHC-Immunohistochemistry IF-Immunofluorescence IP-Immunoprecipitation FC-Flow cytometry ChIP-Chromatin Immunoprecipitation Reactivity: H-Human R-Rat M-Mouse Mk-Monkey Dg-Dog Ch-Chicken Hm-Hamster Rb-Rabbit Sh-Sheep Pg-Pig Z-Zebrafish X-Xenopus C-Cow.