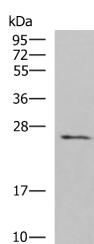


CLEC4D Polyclonal Antibody

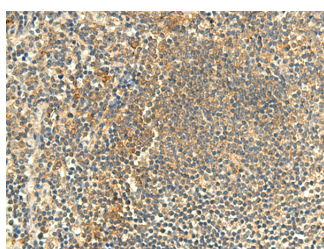
Catalog No.	E-AB-18220	Reactivity	H
Storage	Store at -20°C. Avoid freeze / thaw cycles.	Host	Rabbit
Applications	WB,IHC,ELISA	Isotype	IgG

Note: Centrifuge before opening to ensure complete recovery of vial contents.

Images



Western blot analysis of Human fetal brain tissue lysate using CLEC4D Polyclonal Antibody at dilution of 1:700



Immunohistochemistry of paraffin-embedded Human tonsil tissue using CLEC4D Polyclonal Antibody at dilution of 1:50 (x200)

Immunogen Information

Immunogen	Fusion protein of human CLEC4D
Gene Accession	BC032313
Swissprot	Q8WXI8
Synonyms	CLC4D,CLEC 6,CLEC6,CLECSF8,lectin,C type,Macrophage C type lectin,MCL,MGC40078,MPCL

Product Information

Calculated MW	25 kDa
Observed MW	Refer to figures
Buffer	PBS with 0.05% NaN3 and 40% Glycerol,pH7.4
Purify	Antigen affinity purification
Dilution	WB 1:500-1:2000, IHC 1:50-1:300, ELISA 1:5000-1:10000

Background

This gene encodes a member of the C-type lectin/C-type lectin-like domain (CTL/CTLD) superfamily. Members of this family share a common protein fold and have diverse functions, such as cell adhesion, cell-cell signalling, glycoprotein turnover, and roles in inflammation and immune response. This gene is closely linked to other CTL/CTLD superfamily members on chromosome 12p13 in the natural killer gene complex region.

For Research Use Only

Thank you for your recent purchase.
 If you would like to learn more about antibodies, please visit www.elabscience.com.

**Focus on your research
 Service for life science**

Applications:WB-Western Blot IHC-Immunohistochemistry IF-Immunofluorescence IP-Immunoprecipitation FC-Flow cytometry ChIP-Chromatin Immunoprecipitation Reactivity: H-Human R-Rat M-Mouse Mk-Monkey Dg-Dog Ch-Chicken Hm-Hamster Rb-Rabbit Sh-Sheep Pg-Pig Z-Zebrafish X-Xenopus C-Cow.