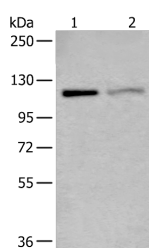


MCM9 Polyclonal Antibody

Catalog No.	E-AB-18239	Reactivity	H,M,R
Storage	Store at -20°C. Avoid freeze / thaw cycles.	Host	Rabbit
Applications	WB,ELISA	Isotype	IgG

Note: Centrifuge before opening to ensure complete recovery of vial contents.

Images



Western blot analysis of K562 and 231 cell lysates using MCM9 Polyclonal Antibody at dilution of 1:800

Immunogen Information

Immunogen	Fusion protein of human MCM9
Gene Accession	BC031658
Swissprot	Q9NXL9
Synonyms	C6orf61,DNA replication licensing factor MCM9,hMCM9,MCMDC1

Product Information

Calculated MW	127 kDa
Observed MW	Refer to figures
Buffer	PBS with 0.05% NaN ₃ and 40% Glycerol,pH7.4
Purify	Antigen affinity purification
Dilution	WB 1:500-1:2000, ELISA 1:2000-1:5000

Background

The protein encoded by this gene is a member of the mini-chromosome maintenance (MCM) protein family that are essential for the initiation of eukaryotic genome replication. Binding of this protein to chromatin has been shown to be a pre-requisite for recruiting the MCM2-7 helicase to DNA replication origins. This protein also binds, and is a positive regulator of, the chromatin licensing and DNA replication factor 1, CDT1.

For Research Use Only

Thank you for your recent purchase.

If you would like to learn more about antibodies, please visit www.elabscience.com.

**Focus on your research
Service for life science**

Applications:WB-Western Blot IHC-Immunohistochemistry IF-Immunofluorescence IP-Immunoprecipitation FC-Flow cytometry ChIP-Chromatin Immunoprecipitation Reactivity: H-Human R-Rat M-Mouse Mk-Monkey Dg-Dog Ch-Chicken Hm-Hamster Rb-Rabbit Sh-Sheep Pg-Pig Z-Zebrafish X-Xenopus C-Cow.