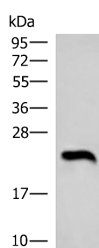


NEUROG3 Polyclonal Antibody

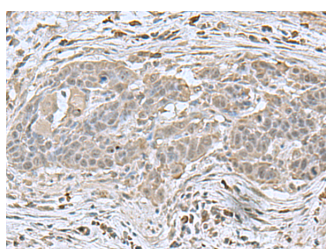
Catalog No.	E-AB-18242	Reactivity	H
Storage	Store at -20°C. Avoid freeze / thaw cycles.	Host	Rabbit
Applications	WB,IHC,ELISA	Isotype	IgG

Note: Centrifuge before opening to ensure complete recovery of vial contents.

Images



Western blot analysis of Human heart tissue lysate using NEUROG3 Polyclonal Antibody at dilution of 1:1000



Immunohistochemistry of paraffin-embedded Human esophagus cancer tissue using NEUROG3 Polyclonal Antibody at dilution of 1:70(×200)

Immunogen Information

Immunogen	Full length fusion protein
Gene Accession	BC117488
Swissprot	Q9Y4Z2
Synonyms	ATH4B,Atoh5,bHLHa7,Class A basic helix-loop-helix protein 7,Math4B,NEUROG3,Neurogenin-3,NGN-3,ngn3,NGN3,OTTHUMP00000019730,Protein atonal homolog 5

Product Information

Calculated MW	23 kDa
Observed MW	Refer to figures
Buffer	PBS with 0.05% NaN ₃ and 40% Glycerol,pH7.4
Purify	Antigen affinity purification
Dilution	WB 1:1000-1:5000, IHC 1:50-1:200, ELISA 1:5000-1:10000

Background

The protein encoded by this gene is a basic helix-loop-helix (bHLH) transcription factor involved in neurogenesis. The encoded protein likely acts as a heterodimer with another bHLH protein. Defects in this gene are a cause of congenital malabsorptive diarrhea 4 (DIAR4).

For Research Use Only

Thank you for your recent purchase.
 If you would like to learn more about antibodies, please visit www.elabscience.com.

**Focus on your research
 Service for life science**

Applications:WB-Western Blot IHC-Immunohistochemistry IF-Immunofluorescence IP-Immunoprecipitation FC-Flow cytometry ChIP-Chromatin Immunoprecipitation Reactivity: H-Human R-Rat M-Mouse Mk-Monkey Dg-Dog Ch-Chicken Hm-Hamster Rb-Rabbit Sh-Sheep Pg-Pig Z-Zebrafish X-Xenopus C-Cow.