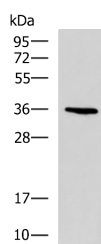


BDNF Polyclonal Antibody

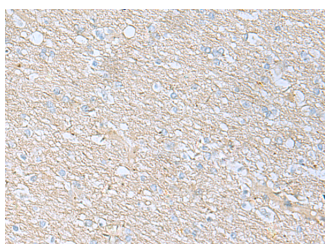
Catalog No.	E-AB-18244	Reactivity	H,M,R
Storage	Store at -20°C. Avoid freeze / thaw cycles.	Host	Rabbit
Applications	WB,IHC,ELISA	Isotype	IgG

Note: Centrifuge before opening to ensure complete recovery of vial contents.

Images



Western blot analysis of A549 cell lysate using BDNF Polyclonal Antibody at dilution of 1:900



Immunohistochemistry of paraffin-embedded Human brain tissue using BDNF Polyclonal Antibody at dilution of 1:65(x200)



Immunohistochemistry of paraffin-embedded Human liver cancer tissue using BDNF Polyclonal Antibody at dilution of 1:65(x200)

Immunogen Information

Immunogen	Fusion protein of human BDNF
Gene Accession	BC029795
Swissprot	P23560
Synonyms	Abrineurin, ANON2, BDNF, BDNF, Brain Derived Neurotrophic Factor, Brain-derived neurotrophic factor, BULN2, MGC34632, Neurotrophin

Product Information

Calculated MW	28 kDa
Observed MW	Refer to figures
Buffer	PBS with 0.05% NaN ₃ and 40% Glycerol, pH7.4
Purify	Antigen affinity purification
Dilution	WB 1:500-1:2000, IHC 1:50-1:100, ELISA 1:5000-1:10000

Background

BDNF is a member of the nerve growth factor family. It is induced by cortical neurons, and is necessary for survival of striatal neurons in the brain. Expression of BDNF is reduced in both Alzheimer's and Huntington disease patients. It plays a role in the regulation of stress response and in the biology of mood disorders.

For Research Use Only

Thank you for your recent purchase.
 If you would like to learn more about antibodies, please visit www.elabscience.com.

**Focus on your research
 Service for life science**

Applications: WB-Western Blot IHC-Immunohistochemistry IF-Immunofluorescence IP-Immunoprecipitation FC-Flow cytometry ChIP-Chromatin Immunoprecipitation Reactivity: H-Human R-Rat M-Mouse Mk-Monkey Dg-Dog Ch-Chicken Hm-Hamster Rb-Rabbit Sh-Sheep Pg-Pig Z-Zebrafish X-Xenopus C-Cow.