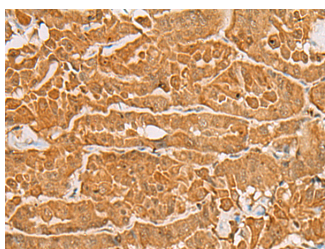


MAPK14 Polyclonal Antibody

| | | | |
|---------------------|---|-------------------|--------|
| Catalog No. | E-AB-18245 | Reactivity | H,M,R |
| Storage | Store at -20°C. Avoid freeze / thaw cycles. | Host | Rabbit |
| Applications | IHC,ELISA | Isotype | IgG |

Note: Centrifuge before opening to ensure complete recovery of vial contents.

Images



Immunohistochemistry of paraffin-embedded Human thyroid cancer tissue using MAPK14 Polyclonal Antibody at dilution of 1:60(×200)

Immunogen Information

| | |
|-----------------------|---|
| Immunogen | Fusion protein of human MAPK14 |
| Gene Accession | BC000092 |
| Swissprot | Q16539 |
| Synonyms | CSBP 1,CSBP 2,CSBP,CSBP1,CSBP2,CSPB1,MK14,Mxi 2,MXI2,p38 ALPHA,p38,PRKM14,PRKM15,RK,SAPK2A |

Product Information

| | |
|-----------------|--|
| Buffer | PBS with 0.05% NaN3 and 40% Glycerol,pH7.4 |
| Purify | Antigen affinity purification |
| Dilution | IHC 1:100-1:300, ELISA 1:5000-1:10000 |

Background

MAPK14(mitogen-activated protein kinase 14) is also named as SAPK2A ,p38MAPK,CSBP1,RK,p38,EXIP,Mxi2,CSBP2,PRKM14,PRKM15,CSP B1,p38ALPHA and belongs to the MAP kinase subfamily.

MAPK14-signaling is a central pathway for the integration of instructive signals in dendritic cells for T(H)17 differentiation and inflammation. It plays an important role in the regulation of hematopoietic stem cellself-renewal in vitro and inhibition of MAPK14 activation with a small molecule inhibitor may represent a novel approach to promote ex vivo expansion of hematopoietic stem cell. This protein has 4 isoforms produced by alternative splicing.

For Research Use Only

Thank you for your recent purchase.
 If you would like to learn more about antibodies,please visit www.elabscience.com.

**Focus on your research
 Service for life science**

Applications:WB-Western Blot IHC-Immunohistochemistry IF-Immunofluorescence IP-Immunoprecipitation FC-Flow cytometry ChIP-
 Chromatin Immunoprecipitation Reactivity: H-Human R-Rat M-Mouse Mk-Monkey Dg-Dog Ch-Chicken Hm-Hamster Rb-Rabbit Sh-
 Sheep Pg-Pig Z-Zebrafish X-Xenopus C-Cow.