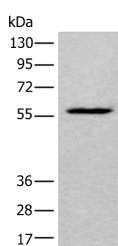


LDHD Polyclonal Antibody

Catalog No.	E-AB-18267	Reactivity	H
Storage	Store at -20°C. Avoid freeze / thaw cycles.	Host	Rabbit
Applications	WB,ELISA	Isotype	IgG

Note: Centrifuge before opening to ensure complete recovery of vial contents.

Images



Western blot analysis of HEPG2 cell lysate using LDHD Polyclonal Antibody at dilution of 1:400

Immunogen Information

Immunogen	Fusion protein of human LDHD
Gene Accession	BC047902
Swissprot	Q86WU2
Synonyms	D lactate dehydrogenase,DLD,Lactate dehydrogenase D,MGC57726,Probable D lactate dehydrogenase mitochondrial

Product Information

Calculated MW	55 kDa
Observed MW	Refer to figures
Buffer	PBS with 0.05% NaN ₃ and 40% Glycerol,pH7.4
Purify	Antigen affinity purification
Dilution	WB 1:500-1:2000, ELISA 1:5000-1:10000

Background

LDHD belongs to the D-isomer specific 2-hydroxyacid dehydrogenase family. D-lactate and D-glycerate dehydrogenase activities have been found in a similar protein in yeast. Alternative splicing occurs at this locus and two transcript variants encoding distinct isoforms have been identified.

For Research Use Only

Thank you for your recent purchase.

If you would like to learn more about antibodies, please visit www.elabscience.com.

**Focus on your research
 Service for life science**

Applications:WB-Western Blot IHC-Immunohistochemistry IF-Immunofluorescence IP-Immunoprecipitation FC-Flow cytometry ChIP-Chromatin Immunoprecipitation Reactivity: H-Human R-Rat M-Mouse Mk-Monkey Dg-Dog Ch-Chicken Hm-Hamster Rb-Rabbit Sh-Sheep Pg-Pig Z-Zebrafish X-Xenopus C-Cow.