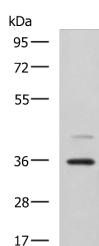


UBLCP1 Polyclonal Antibody

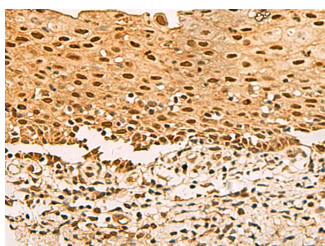
Catalog No.	E-AB-18300	Reactivity	H,M,R
Storage	Store at -20°C. Avoid freeze / thaw cycles.	Host	Rabbit
Applications	WB,IHC,ELISA	Isotype	IgG

Note: Centrifuge before opening to ensure complete recovery of vial contents.

Images



Western blot analysis of A172 cell lysate using UBLCP1 Polyclonal Antibody at dilution of 1:1150



Immunohistochemistry of paraffin-embedded Human cervical cancer tissue using UBLCP1 Polyclonal Antibody at dilution of 1:80(×200)

Immunogen Information

Immunogen	Fusion protein of human UBLCP1
Gene Accession	BC013425
Swissprot	Q8WVY7
Synonyms	CPUB1,FLJ25267,MGC10067,Ubiquitin like domain containing CTD phosphatase 1,UBLCP1

Product Information

Calculated MW	37 kDa
Observed MW	Refer to figures
Buffer	PBS with 0.05% NaN ₃ and 40% Glycerol,pH7.4
Purify	Antigen affinity purification
Dilution	WB 1:1000-1:5000, IHC 1:100-1:200, ELISA 1:5000-1:10000

Background

Dephosphorylates 26S nuclear proteasomes, thereby decreasing their proteolytic activity. The dephosphorylation may prevent assembly of the core and regulatory particles (CP and RP) into mature 26S proteasome.

For Research Use Only

Thank you for your recent purchase.
 If you would like to learn more about antibodies, please visit www.elabscience.com.

**Focus on your research
 Service for life science**

Applications:WB-Western Blot IHC-Immunohistochemistry IF-Immunofluorescence IP-Immunoprecipitation FC-Flow cytometry ChIP-Chromatin Immunoprecipitation Reactivity: H-Human R-Rat M-Mouse Mk-Monkey Dg-Dog Ch-Chicken Hm-Hamster Rb-Rabbit Sh-Sheep Pg-Pig Z-Zebrafish X-Xenopus C-Cow.