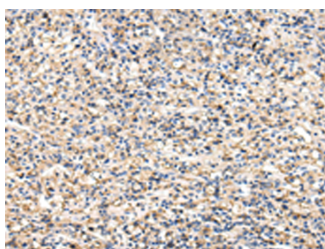


## VCAM1 Polyclonal Antibody

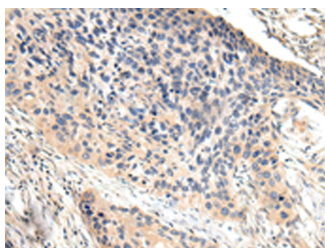
<b>Catalog No.</b>	E-AB-18302	<b>Reactivity</b>	H,M,R
<b>Storage</b>	Store at -20°C. Avoid freeze / thaw cycles.	<b>Host</b>	Rabbit
<b>Applications</b>	IHC,ELISA	<b>Isotype</b>	IgG

**Note:** Centrifuge before opening to ensure complete recovery of vial contents.

### Images



Immunohistochemistry of paraffin-embedded Human prostate cancer tissue using VCAM1 Polyclonal Antibody at dilution of 1:30(×200)



Immunohistochemistry of paraffin-embedded Human esophagus cancer tissue using VCAM1 Polyclonal Antibody at dilution of 1:30(×200)

### Immunogen Information

<b>Immunogen</b>	Fusion protein of human VCAM1
<b>Gene Accession</b>	BC068490
<b>Swissprot</b>	P19320
<b>Synonyms</b>	CD106,CD106 Antigen,INCAM 100,INCAM-100,L1CAM,MGC99561,V-CAM 1,VCAM 1,VCAM1

### Product Information

<b>Buffer</b>	PBS with 0.05% NaN <sub>3</sub> and 40% Glycerol,pH7.4
<b>Purify</b>	Antigen affinity purification
<b>Dilution</b>	IHC 1:25-1:100, ELISA 1:2000-1:5000

### Background

Vascular cell adhesion molecule 1 (VCAM1),also known as CD106,is a transmembrane glycoprotein belonging to the immunoglobulin gene superfamily. VCAM1 is expressed by cytokine-activated endothelium,interacts with integrin VLA4 ( $\alpha 4\beta 1$ ) present on the surface of leukocytes,and mediates both adhesion and signal transduction. It is also expressed either constitutively or inducibly in a variety of other cell types,including vascular smooth muscle cells,differentiating skeletal muscle cells,renal and neural epithelial cells,macrophages (Kupffer cells),dendritic cells,and bone marrow stromal cells .

#### For Research Use Only

Thank you for your recent purchase.  
 If you would like to learn more about antibodies,please visit [www.elabscience.com](http://www.elabscience.com).

**Focus on your research  
 Service for life science**

Applications:WB-Western Blot IHC-Immunohistochemistry IF-Immunofluorescence IP-Immunoprecipitation FC-Flow cytometry ChIP-Chromatin Immunoprecipitation Reactivity: H-Human R-Rat M-Mouse Mk-Monkey Dg-Dog Ch-Chicken Hm-Hamster Rb-Rabbit Sh-Sheep Pg-Pig Z-Zebrafish X-Xenopus C-Cow.