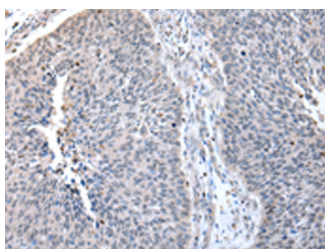


## ZNF23 Polyclonal Antibody

<b>Catalog No.</b>	E-AB-18325	<b>Reactivity</b>	H
<b>Storage</b>	Store at -20°C. Avoid freeze / thaw cycles.	<b>Host</b>	Rabbit
<b>Applications</b>	IHC,ELISA	<b>Isotype</b>	IgG

**Note:** Centrifuge before opening to ensure complete recovery of vial contents.

### Images



Immunohistochemistry of paraffin-embedded Human lung cancer tissue using ZNF23 Polyclonal Antibody at dilution of 1:50(×200)

### Immunogen Information

<b>Immunogen</b>	Fusion protein of human ZNF23
<b>Gene Accession</b>	BC007256
<b>Swissprot</b>	P17027
<b>Synonyms</b>	Zinc Finger Protein 359,ZNF612,Kruppel-Like Zinc Finger Factor X31,Zinc Finger Protein 23 (KOX 16),Zinc Zinc Finger Protein 32,Zfp612

### Product Information

<b>Buffer</b>	PBS with 0.05% NaN <sub>3</sub> and 40% Glycerol,pH7.4
<b>Purify</b>	Antigen affinity purification
<b>Dilution</b>	IHC 1:30-1:150, ELISA 1:2000-1:10000

### Background

ZNF23 (Zinc Finger Protein 23) is a Protein Coding gene. Diseases associated with ZNF23 include Lymphatic System Cancer and Lymphosarcoma. Among its related pathways are Gene Expression and Herpes simplex virus 1 infection. Gene Ontology (GO) annotations related to this gene include nucleic acid binding and DNA-binding transcription factor activity. An important paralog of this gene is ZNF658.

#### For Research Use Only

Thank you for your recent purchase.  
 If you would like to learn more about antibodies, please visit [www.elabscience.com](http://www.elabscience.com).

**Focus on your research  
 Service for life science**

Applications:WB-Western Blot IHC-Immunohistochemistry IF-Immunofluorescence IP-Immunoprecipitation FC-Flow cytometry ChIP-Chromatin Immunoprecipitation Reactivity: H-Human R-Rat M-Mouse Mk-Monkey Dg-Dog Ch-Chicken Hm-Hamster Rb-Rabbit Sh-Sheep Pg-Pig Z-Zebrafish X-Xenopus C-Cow.