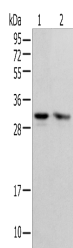


PSMF1 Polyclonal Antibody

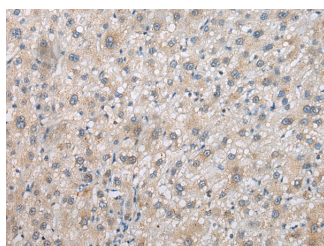
Catalog No.	E-AB-18373	Reactivity	H,M,R
Storage	Store at -20°C. Avoid freeze / thaw cycles.	Host	Rabbit
Applications	WB,IHC,ELISA	Isotype	IgG

Note: Centrifuge before opening to ensure complete recovery of vial contents.

Images



Western blot analysis of HEPG2 and Hela cell using PSMF1 Polyclonal Antibody at dilution of 1:300



Immunohistochemistry of paraffin-embedded Human liver cancer tissue using PSMF1 Polyclonal Antibody at dilution of 1:30(×200)

Immunogen Information

Immunogen	Full length fusion protein
Gene Accession	BC126462
Swissprot	Q92530
Synonyms	hPI31,PI31,Proteasome inhibitor PI31 subunit,PSMB2,Psmf1,PSMF1,RP23 402M7.5

Product Information

Calculated MW	30 kDa
Observed MW	Refer to figures
Buffer	PBS with 0.05% NaN ₃ and 40% Glycerol,pH7.4
Purify	Antigen affinity purification
Dilution	WB 1:500-1:2000, IHC 1:25-1:100, ELISA 1:5000-1:10000

Background

The 26S proteasome is a multicatalytic proteinase complex with a highly ordered structure composed of 2 complexes, a 20S core and a 19S regulator. The 20S core is composed of 4 rings of 28 non-identical subunits; 2 rings are composed of 7 alpha subunits and 2 rings are composed of 7 beta subunits. The 19S regulator is composed of a base, which contains 6 ATPase subunits and 2 non-ATPase subunits, and a lid, which contains up to 10 non-ATPase subunits.

For Research Use Only

Thank you for your recent purchase.
 If you would like to learn more about antibodies, please visit www.elabscience.com.

**Focus on your research
 Service for life science**

Applications:WB-Western Blot IHC-Immunohistochemistry IF-Immunofluorescence IP-Immunoprecipitation FC-Flow cytometry ChIP-Chromatin Immunoprecipitation Reactivity: H-Human R-Rat M-Mouse Mk-Monkey Dg-Dog Ch-Chicken Hm-Hamster Rb-Rabbit Sh-Sheep Pg-Pig Z-Zebrafish X-Xenopus C-Cow.