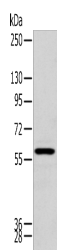


ZNF248 Polyclonal Antibody

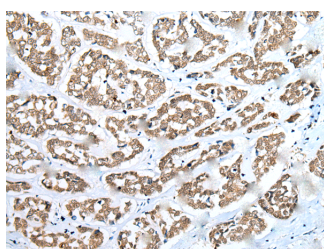
Catalog No.	E-AB-18384	Reactivity	H
Storage	Store at -20°C. Avoid freeze / thaw cycles.	Host	Rabbit
Applications	WB,IHC,ELISA	Isotype	IgG

Note: Centrifuge before opening to ensure complete recovery of vial contents.

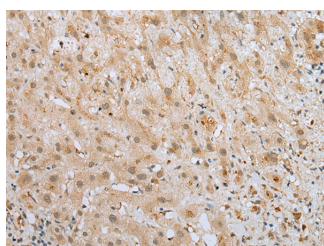
Images



Western blot analysis of Human kidney tissue using ZNF248 Polyclonal Antibody at dilution of 1:200



Immunohistochemistry of paraffin-embedded Human esophagus cancer tissue using ZNF248 Polyclonal Antibody at dilution of 1:25(x200)



Immunohistochemistry of paraffin-embedded Human liver cancer tissue using ZNF248 Polyclonal Antibody at dilution of 1:25(x200)

Immunogen Information

Immunogen	Full length fusion protein
Gene Accession	BC021819
Swissprot	Q8NDW4
Synonyms	bA162G10.3,KIAA0137,KRAB protein domain,MGC131882,ZN248,ZNF248

Product Information

Calculated MW	67 kDa
Observed MW	Refer to figures
Buffer	PBS with 0.05% NaN3 and 40% Glycerol,pH7.4
Purify	Antigen affinity purification
Dilution	WB 1:500-1:2000, IHC 1:20-1:100, ELISA 1:5000-1:10000

Background

ZNF248 belongs to the krueppel C2H2-type zinc-finger protein family. It contains 8 C2H2-type zinc fingers and 1 KRAB domain. ZNF248 may be involved in transcriptional regulation.

For Research Use Only

Thank you for your recent purchase.
 If you would like to learn more about antibodies, please visit www.elabscience.com.

**Focus on your research
 Service for life science**

Applications:WB-Western Blot IHC-Immunohistochemistry IF-Immunofluorescence IP-Immunoprecipitation FC-Flow cytometry ChIP-Chromatin Immunoprecipitation Reactivity: H-Human R-Rat M-Mouse Mk-Monkey Dg-Dog Ch-Chicken Hm-Hamster Rb-Rabbit Sh-Sheep Pg-Pig Z-Zebrafish X-Xenopus C-Cow.