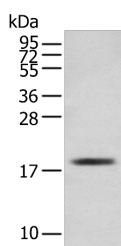


TNNC1 Polyclonal Antibody

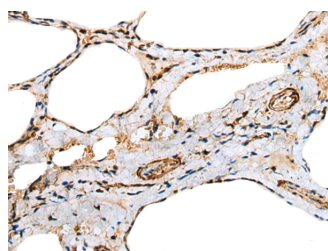
Catalog No.	E-AB-18400	Reactivity	H,M
Storage	Store at -20°C. Avoid freeze / thaw cycles.	Host	Rabbit
Applications	WB,IHC,ELISA	Isotype	IgG

Note: Centrifuge before opening to ensure complete recovery of vial contents.

Images



Western blot analysis of Mouse skeletal muscle tissue using TNNC1 Polyclonal Antibody at dilution of 1:250



Immunohistochemistry of paraffin-embedded Human thyroid cancer tissue using TNNC1 Polyclonal Antibody at dilution of 1:25(×200)

Immunogen Information

Immunogen	Full length fusion protein
Gene Accession	BC030244
Swissprot	P63316
Synonyms	tnnc1a, Cardiac troponin C, slow skeletal and cardiac muscles, TN-C, TNC, Tnnc1, TNNC1, TNNI3, Troponin C, Troponin C slow, Troponin C1 slow

Product Information

Calculated MW	18 kDa
Observed MW	Refer to figures
Buffer	PBS with 0.05% NaN ₃ and 40% Glycerol, pH7.4
Purify	Antigen affinity purification
Dilution	WB 1:500-1:2000, IHC 1:10-1:50, ELISA 1:5000-1:10000

Background

Troponin is a central regulatory protein of striated muscle contraction, and together with tropomyosin, is located on the actin filament. Troponin consists of 3 subunits: TnI, which is the inhibitor of actomyosin ATPase; TnT, which contains the binding site for tropomyosin; and TnC, the protein encoded by this gene. The binding of calcium to TnC abolishes the inhibitory action of TnI, thus allowing the interaction of actin with myosin, the hydrolysis of ATP, and the generation of tension.

For Research Use Only

Thank you for your recent purchase.
 If you would like to learn more about antibodies, please visit www.elabscience.com.

**Focus on your research
 Service for life science**

Applications: WB-Western Blot IHC-Immunohistochemistry IF-Immunofluorescence IP-Immunoprecipitation FC-Flow cytometry ChIP-Chromatin Immunoprecipitation Reactivity: H-Human R-Rat M-Mouse Mk-Monkey Dg-Dog Ch-Chicken Hm-Hamster Rb-Rabbit Sh-Sheep Pg-Pig Z-Zebrafish X-Xenopus C-Cow.