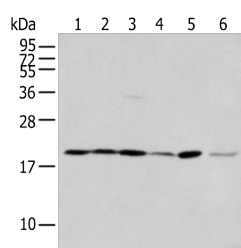


EEF1E1 Polyclonal Antibody

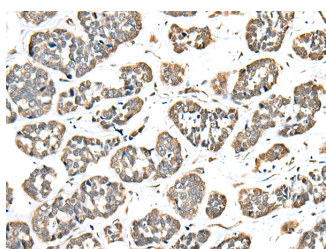
| | | | |
|---------------------|---|-------------------|--------|
| Catalog No. | E-AB-18404 | Reactivity | H,M |
| Storage | Store at -20°C. Avoid freeze / thaw cycles. | Host | Rabbit |
| Applications | WB,IHC,ELISA | Isotype | IgG |

Note: Centrifuge before opening to ensure complete recovery of vial contents.

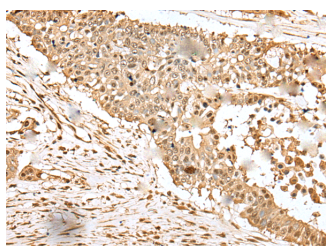
Images



Western blot analysis of 293T cell Hepg2 cell and A431 cell using EEF1E1 Polyclonal Antibody at dilution of 1:400



Immunohistochemistry of paraffin-embedded Human esophagus cancer tissue using EEF1E1 Polyclonal Antibody at dilution of 1:35(×200)



Immunohistochemistry of paraffin-embedded Human colorectal cancer tissue using EEF1E1 Polyclonal Antibody at dilution of 1:35(×200)

Immunogen Information

| | |
|-----------------------|--|
| Immunogen | Full length fusion protein |
| Gene Accession | BC005291 |
| Swissprot | O43324 |
| Synonyms | AIMP 3,AIMP3,MCA3,p18,p18 component of aminoacyl tRNA synthetase complex |

Product Information

| | |
|----------------------|--|
| Calculated MW | 20 kDa |
| Observed MW | Refer to figures |
| Buffer | PBS with 0.05% NaN ₃ and 40% Glycerol,pH7.4 |
| Purify | Antigen affinity purification |
| Dilution | WB 1:500-1:2000, IHC 1:25-1:100, ELISA 1:5000-1:10000 |

Background

This gene encodes a multifunctional protein that localizes to both the cytoplasm and nucleus. In the cytoplasm, the encoded protein is an auxiliary component of the macromolecular aminoacyl-tRNA synthase complex. However, its mouse homolog has been shown to translocate to the nucleus in response to DNA damage, and it plays a positive role in ATM/ATR-mediated p53 activation. Alternative splicing results in multiple transcript variants. Read-through transcription also exists between this gene and the neighboring downstream MUTED (muted homolog) gene. An EEF1E1-related pseudogene has been identified on chromosome 2.

For Research Use Only

Thank you for your recent purchase.
 If you would like to learn more about antibodies, please visit www.elabscience.com.

**Focus on your research
 Service for life science**

Applications:WB-Western Blot IHC-Immunohistochemistry IF-Immunofluorescence IP-Immunoprecipitation FC-Flow cytometry ChIP-Chromatin Immunoprecipitation Reactivity: H-Human R-Rat M-Mouse Mk-Monkey Dg-Dog Ch-Chicken Hm-Hamster Rb-Rabbit Sh-Sheep Pg-Pig Z-Zebrafish X-Xenopus C-Cow.