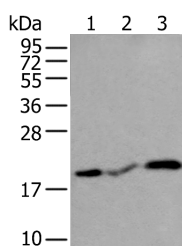


CSRP3 Polyclonal Antibody

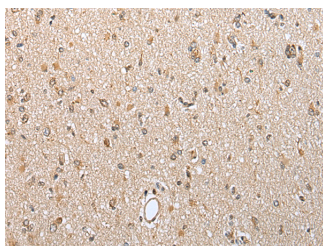
Catalog No.	E-AB-18409	Reactivity	H,M,R
Storage	Store at -20°C. Avoid freeze / thaw cycles.	Host	Rabbit
Applications	WB,IHC,ELISA	Isotype	IgG

Note: Centrifuge before opening to ensure complete recovery of vial contents.

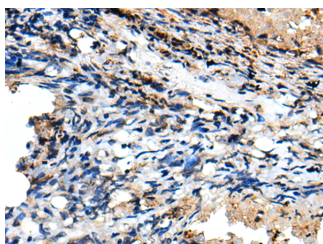
Images



Western blot analysis of Human heart tissue Rat heart tissue and Mouse heart tissue lysates using CSRP3 Polyclonal Antibody at dilution of 1:400



Immunohistochemistry of paraffin-embedded Human brain tissue using CSRP3 Polyclonal Antibody at dilution of 1:40(x200)



Immunohistochemistry of paraffin-embedded Human lung cancer tissue using CSRP3 Polyclonal Antibody at dilution of 1:40(x200)

Immunogen Information

Immunogen	Full length fusion protein
Gene Accession	BC005900
Swissprot	P50461
Synonyms	cardiac,Cardiac LIM protein,CLP,CMD1M,CMH12,CRP3,Csrp3,CSRP3,LMO4,MLP

Product Information

Calculated MW	21 kDa
Observed MW	Refer to figures
Buffer	PBS with 0.05% NaN ₃ and 40% Glycerol,pH7.4
Purify	Antigen affinity purification
Dilution	WB 1:500-1:2000, IHC 1:30-1:150, ELISA 1:5000-1:10000

Background

This gene encodes a member of the CSRP family of LIM domain proteins, which may be involved in regulatory processes important for development and cellular differentiation. The LIM/double zinc-finger motif found in this protein is found in a group of proteins with critical functions in gene regulation, cell growth, and somatic differentiation. Mutations in this gene are thought to cause heritable forms of hypertrophic cardiomyopathy (HCM) and dilated cardiomyopathy (DCM) in humans. Alternatively spliced transcript variants with different 5' UTR, but encoding the same protein, have been found for this gene.

For Research Use Only

Thank you for your recent purchase.
 If you would like to learn more about antibodies, please visit www.elabscience.com.

Focus on your research
Service for life science

Applications:WB-Western Blot IHC-Immunohistochemistry IF-Immunofluorescence IP-Immunoprecipitation FC-Flow cytometry ChIP-Chromatin Immunoprecipitation Reactivity: H-Human R-Rat M-Mouse Mk-Monkey Dg-Dog Ch-Chicken Hm-Hamster Rb-Rabbit Sh-Sheep Pg-Pig Z-Zebrafish X-Xenopus C-Cow.