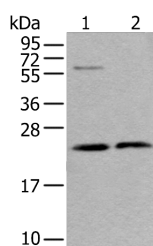


ABHD14B Polyclonal Antibody

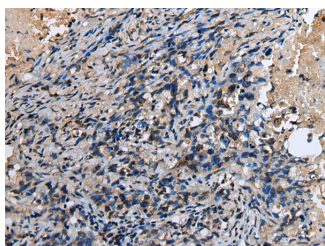
Catalog No.	E-AB-18410	Reactivity	H,M,R
Storage	Store at -20°C. Avoid freeze / thaw cycles.	Host	Rabbit
Applications	WB,IHC,ELISA	Isotype	IgG

Note: Centrifuge before opening to ensure complete recovery of vial contents.

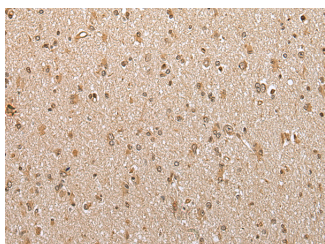
Images



Western blot analysis of LO2 cell and Human testis tissue lysates using ABHD14B Polyclonal Antibody at dilution of 1:350



Immunohistochemistry of paraffin-embedded Human lung cancer tissue using ABHD14B Polyclonal Antibody at dilution of 1:30(×200)



Immunohistochemistry of paraffin-embedded Human brain tissue using ABHD14B Polyclonal Antibody at dilution of 1:30(×200)

Immunogen Information

Immunogen	Full length fusion protein
Gene Accession	BC007234
Swissprot	Q96IU4
Synonyms	ABHD14B, ABHEB, CIB, MGC15429, OTTHUMP0000212469

Product Information

Calculated MW	22 kDa
Observed MW	Refer to figures
Buffer	PBS with 0.05% NaN ₃ and 40% Glycerol, pH7.4
Purify	Antigen affinity purification
Dilution	WB 1:500-1:2000, IHC 1:25-1:100, ELISA 1:5000-1:10000

Background

ABHD14B is a 210 amino acid protein that localizes to both the cytoplasm and the nucleus where it exists as two alternatively spliced isoforms. Has hydrolase activity towards p-nitrophenyl butyrate (in vitro). May activate transcription.

For Research Use Only

Thank you for your recent purchase.
 If you would like to learn more about antibodies, please visit www.elabscience.com.

**Focus on your research
 Service for life science**

Applications: WB-Western Blot IHC-Immunohistochemistry IF-Immunofluorescence IP-Immunoprecipitation FC-Flow cytometry ChIP-Chromatin Immunoprecipitation Reactivity: H-Human R-Rat M-Mouse Mk-Monkey Dg-Dog Ch-Chicken Hm-Hamster Rb-Rabbit Sh-Sheep Pg-Pig Z-Zebrafish X-Xenopus C-Cow.