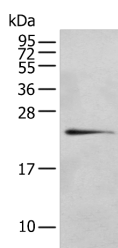


RILPL2 Polyclonal Antibody

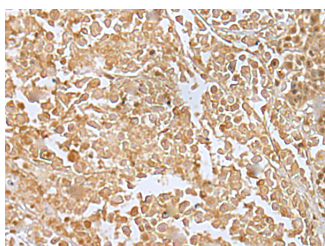
Catalog No.	E-AB-18411	Reactivity	H
Storage	Store at -20°C. Avoid freeze / thaw cycles.	Host	Rabbit
Applications	WB,IHC,ELISA	Isotype	IgG

Note: Centrifuge before opening to ensure complete recovery of vial contents.

Images



Western blot analysis of 293T cell using RILPL2 Polyclonal Antibody at dilution of 1:400



Immunohistochemistry of paraffin-embedded Human colorectal cancer tissue using RILPL2 Polyclonal Antibody at dilution of 1:30(×200)

Immunogen Information

Immunogen	Full length fusion protein
Gene Accession	BC013042
Swissprot	Q969X0
Synonyms	FLJ30380,FLJ32372,MGC7036,p40phox-binding protein,Rab-interacting lysosomal protein-like 2,RILP-like protein 2,RILPL2,RIPL2,RLP2

Product Information

Calculated MW	24 kDa
Observed MW	Refer to figures
Buffer	PBS with 0.05% NaN ₃ and 40% Glycerol,pH7.4
Purify	Antigen affinity purification
Dilution	WB 1:500-1:2000, IHC 1:25-1:100, ELISA 1:5000-1:10000

Background

This gene encodes a protein that contains a rab-interacting lysosomal protein-like domain. This protein may be involved in regulating lysosome morphology. This protein may also be a target for the Hepatitis C virus and assist in viral replication. Alternate splicing results in multiple transcript variants.

For Research Use Only

Thank you for your recent purchase.
 If you would like to learn more about antibodies, please visit www.elabscience.com.

**Focus on your research
 Service for life science**

Applications:WB-Western Blot IHC-Immunohistochemistry IF-Immunofluorescence IP-Immunoprecipitation FC-Flow cytometry ChIP-Chromatin Immunoprecipitation Reactivity: H-Human R-Rat M-Mouse Mk-Monkey Dg-Dog Ch-Chicken Hm-Hamster Rb-Rabbit Sh-Sheep Pg-Pig Z-Zebrafish X-Xenopus C-Cow.