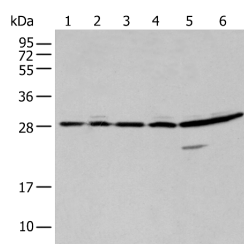


SFN Polyclonal Antibody

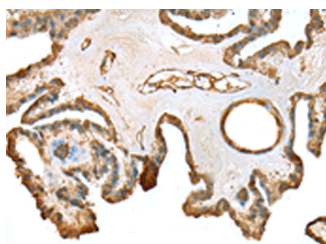
Catalog No.	E-AB-18436	Reactivity	H,M
Storage	Store at -20°C. Avoid freeze / thaw cycles.	Host	Rabbit
Applications	WB,IHC,ELISA	Isotype	IgG

Note: Centrifuge before opening to ensure complete recovery of vial contents.

Images



Western blot analysis of 293T A549 and Hela cell using SFN Polyclonal Antibody at dilution of 1:250



Immunohistochemistry of paraffin-embedded Human thyroid cancer tissue using SFN Polyclonal Antibody at dilution of 1:25(×200)

Immunogen Information

Immunogen	Full length fusion protein
Gene Accession	BC000329
Swissprot	P31947
Synonyms	14 3 3 protein sigma,1433S,HME1,MGC143283,Mkr n3,Mme1,RP23 137L22.11,SFN,YWHAS

Product Information

Calculated MW	28 kDa
Observed MW	Refer to figures
Buffer	PBS with 0.05% NaN3 and 40% Glycerol,pH7.4
Purify	Antigen affinity purification
Dilution	WB 1:500-1:2000, IHC 1:25-1:100, ELISA 1:5000-1:10000

Background

14-3-3 sigma is a member 14-3-3 family of highly conserved proteins participating in diverse cellular processes including cell cycle progression. It is exclusively present in various epithelial cells, and alternatively named as human epithelial marker (HEM), or stratifin. Alteration of its expression has been linked to cancer.

For Research Use Only

Thank you for your recent purchase.
 If you would like to learn more about antibodies, please visit www.elabscience.com.

**Focus on your research
 Service for life science**

Applications: WB-Western Blot IHC-Immunohistochemistry IF-Immunofluorescence IP-Immunoprecipitation FC-Flow cytometry ChIP-Chromatin Immunoprecipitation Reactivity: H-Human R-Rat M-Mouse Mk-Monkey Dg-Dog Ch-Chicken Hm-Hamster Rb-Rabbit Sh-Sheep Pg-Pig Z-Zebrafish X-Xenopus C-Cow.