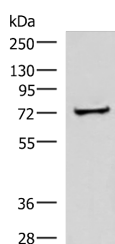


## ZNF263 Polyclonal Antibody

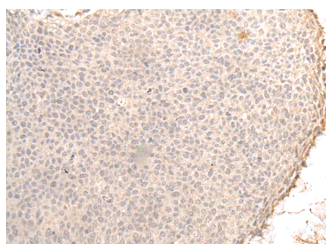
<b>Catalog No.</b>	E-AB-18458	<b>Reactivity</b>	H
<b>Storage</b>	Store at -20°C. Avoid freeze / thaw cycles.	<b>Host</b>	Rabbit
<b>Applications</b>	WB,IHC,ELISA	<b>Isotype</b>	IgG

**Note:** Centrifuge before opening to ensure complete recovery of vial contents.

### Images



Western blot analysis of Human liver tissue lysate using ZNF263 Polyclonal Antibody at dilution of 1:500



Immunohistochemistry of paraffin-embedded Human cervical cancer tissue using ZNF263 Polyclonal Antibody at dilution of 1:30(×200)

### Immunogen Information

<b>Immunogen</b>	Fusion protein of human ZNF263
<b>Gene Accession</b>	BC008805
<b>Swissprot</b>	O14978
<b>Synonyms</b>	FPM315,Zinc finger protein 263,ZKSCAN12,ZN263,ZNF 263,ZNF263

### Product Information

<b>Calculated MW</b>	77 kDa
<b>Observed MW</b>	Refer to figures
<b>Buffer</b>	PBS with 0.05% NaN <sub>3</sub> and 40% Glycerol,pH7.4
<b>Purify</b>	Antigen affinity purification
<b>Dilution</b>	WB 1:500-1:2000, IHC 1:25-1:100, ELISA 1:5000-1:10000

### Background

ZNF263 (Zinc finger protein 263), also known as FPM315 or ZKSCAN12 (Zinc finger protein with KRAB and SCAN domains 12), is a 683 amino acid nuclear protein that contains nine C<sub>2</sub>H<sub>2</sub>-type zinc fingers, one KRAB domain and one SCAN box domain. ZNF263 acts as a transcriptional repressor in the nucleus and is expressed in various tissues including heart, brain, placenta, lung, liver, skeletal muscle, kidney, pancreas, spleen, thymus, prostate, testis, ovary, small intestine, colon and leukocyte.

#### For Research Use Only

Thank you for your recent purchase.  
 If you would like to learn more about antibodies, please visit [www.elabscience.com](http://www.elabscience.com).

**Focus on your research  
 Service for life science**

Applications:WB-Western Blot IHC-Immunohistochemistry IF-Immunofluorescence IP-Immunoprecipitation FC-Flow cytometry ChIP-Chromatin Immunoprecipitation Reactivity: H-Human R-Rat M-Mouse Mk-Monkey Dg-Dog Ch-Chicken Hm-Hamster Rb-Rabbit Sh-Sheep Pg-Pig Z-Zebrafish X-Xenopus C-Cow.