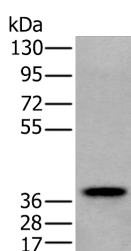


ZPBP Polyclonal Antibody

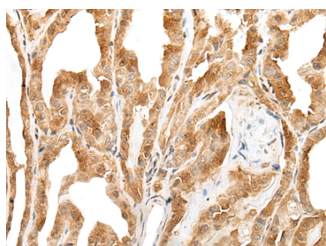
Catalog No.	E-AB-18474	Reactivity	H,M
Storage	Store at -20°C. Avoid freeze / thaw cycles.	Host	Rabbit
Applications	WB,IHC,ELISA	Isotype	IgG

Note: Centrifuge before opening to ensure complete recovery of vial contents.

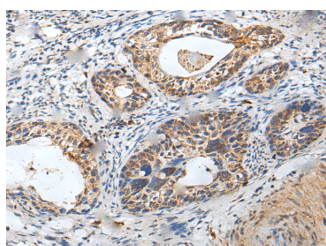
Images



Western blot analysis of Human testis tissue lysate using ZPBP Polyclonal Antibody at dilution of 1:250



Immunohistochemistry of paraffin-embedded Human thyroid cancer tissue using ZPBP Polyclonal Antibody at dilution of 1:30(×200)



Immunohistochemistry of paraffin-embedded Human cervical cancer tissue using ZPBP Polyclonal Antibody at dilution of 1:30(×200)

Immunogen Information

Immunogen	Fusion protein of human ZPBP
Gene Accession	BC005223
Swissprot	Q9BS86
Synonyms	4930486K01Rik,FLJ9322,Iam38,,RP23-446K7.1,Sp3 8,Zona pellucida binding protein,ZPBP

Product Information

Calculated MW	40 kDa
Observed MW	Refer to figures
Buffer	PBS with 0.05% NaN ₃ and 40% Glycerol,pH7.4
Purify	Antigen affinity purification
Dilution	WB 1:500-1:2000, IHC 1:25-1:100, ELISA 1:5000-1:10000

Background

ZPBP is one of several proteins that are thought to participate in secondary binding between acrosome-reacted sperm and the egg-specific extracellular matrix, the zona pellucida (McLeskey et al., 1998 [PubMed 9378618]). May be implicated in gamete interaction during fertilization.

For Research Use Only

Thank you for your recent purchase.
 If you would like to learn more about antibodies, please visit www.elabscience.com.

**Focus on your research
 Service for life science**

Applications:WB-Western Blot IHC-Immunohistochemistry IF-Immunofluorescence IP-Immunoprecipitation FC-Flow cytometry ChIP-Chromatin Immunoprecipitation Reactivity: H-Human R-Rat M-Mouse Mk-Monkey Dg-Dog Ch-Chicken Hm-Hamster Rb-Rabbit Sh-Sheep Pg-Pig Z-Zebrafish X-Xenopus C-Cow.