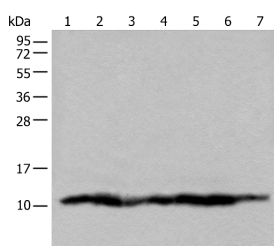


UQCRQ Polyclonal Antibody

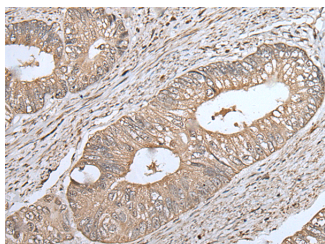
| | | | |
|---------------------|---|-------------------|--------|
| Catalog No. | E-AB-18511 | Reactivity | H,R |
| Storage | Store at -20°C. Avoid freeze / thaw cycles. | Host | Rabbit |
| Applications | WB,IHC,ELISA | Isotype | IgG |

Note: Centrifuge before opening to ensure complete recovery of vial contents.

Images



Western blot analysis of 293T cell lysates using UQCRQ Polyclonal Antibody at dilution of 1:450



Immunohistochemistry of paraffin-embedded Human colorectal cancer tissue using UQCRQ Polyclonal Antibody at dilution of 1:45(×200)

Immunogen Information

| | |
|-----------------------|--|
| Immunogen | Full length fusion protein |
| Gene Accession | BC001390 |
| Swissprot | O14949 |
| Synonyms | Cytochrome b-c1 complex subunit 8,QCR8,QCR8,QP-C,QPC,Uqcrq |

Product Information

| | |
|----------------------|---|
| Calculated MW | 10 kDa |
| Observed MW | Refer to figures |
| Buffer | PBS with 0.05% NaN3 and 40% Glycerol,pH7.4 |
| Purify | Antigen affinity purification |
| Dilution | WB 1:500-1:2000, IHC 1:30-1:150, ELISA 1:5000-1:10000 |

Background

This gene encodes a ubiquinone-binding protein of low molecular mass. This protein is a small core-associated protein and a subunit of ubiquinol-cytochrome c reductase complex III, which is part of the mitochondrial respiratory chain.

For Research Use Only

Thank you for your recent purchase.
 If you would like to learn more about antibodies, please visit www.elabscience.com.

**Focus on your research
 Service for life science**

Applications:WB-Western Blot IHC-Immunohistochemistry IF-Immunofluorescence IP-Immunoprecipitation FC-Flow cytometry ChIP-Chromatin Immunoprecipitation Reactivity: H-Human R-Rat M-Mouse Mk-Monkey Dg-Dog Ch-Chicken Hm-Hamster Rb-Rabbit Sh-Sheep Pg-Pig Z-Zebrafish X-Xenopus C-Cow.