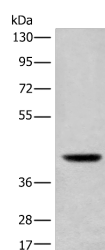


USP12 Polyclonal Antibody

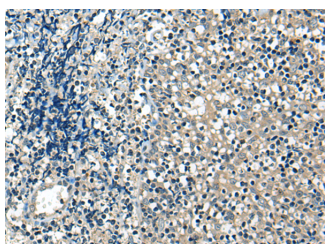
Catalog No.	E-AB-18513	Reactivity	H,M
Storage	Store at -20°C. Avoid freeze / thaw cycles.	Host	Rabbit
Applications	WB,IHC,ELISA	Isotype	IgG

Note: Centrifuge before opening to ensure complete recovery of vial contents.

Images



Western blot analysis of Mouse liver tissue lysate using USP12 Polyclonal Antibody at dilution of 1:700



Immunohistochemistry of paraffin-embedded Human tonsil tissue using USP12 Polyclonal Antibody at dilution of 1:35(×200)

Immunogen Information

Immunogen	Full length fusion protein
Gene Accession	BC026072
Swissprot	O75317
Synonyms	Deubiquitinating enzyme 12,UBH 1,Ubiquitin-specific-processing protease 12,UBP12

Product Information

Calculated MW	43 kDa
Observed MW	Refer to figures
Buffer	PBS with 0.05% NaN ₃ and 40% Glycerol,pH7.4
Purify	Antigen affinity purification
Dilution	WB 1:500-1:2000, IHC 1:25-1:100, ELISA 1:5000-1:10000

Background

The ubiquitin (Ub) pathway involves three sequential enzymatic steps that facilitate the conjugation of Ub and Ub-like molecules to specific protein substrates. Through the use of a wide range of enzymes that can add or remove ubiquitin, the Ub pathway controls many intracellular processes such as signal transduction, transcriptional activation and cell cycle progression. USP12 (ubiquitin specific peptidase 12), also known as UBH1 or USP12L1, is a 370 amino acid protein belonging to the peptidase C19 family and the USP12/USP46 subfamily. Considered a deubiquitinating enzyme, it is suggested that USP12 has almost no deubiquitinating activity by itself and requires the interaction with WDR48 to have high activity. The gene encoding USP12 maps to human chromosome 13, which houses over 400 genes, such as BRCA2 and RB1, and comprises nearly 4% of the human genome.

For Research Use Only

Thank you for your recent purchase.
 If you would like to learn more about antibodies, please visit www.elabscience.com.

Focus on your research
Service for life science

Applications:WB-Western Blot IHC-Immunohistochemistry IF-Immunofluorescence IP-Immunoprecipitation FC-Flow cytometry ChIP-Chromatin Immunoprecipitation Reactivity: H-Human R-Rat M-Mouse Mk-Monkey Dg-Dog Ch-Chicken Hm-Hamster Rb-Rabbit Sh-Sheep Pg-Pig Z-Zebrafish X-Xenopus C-Cow.