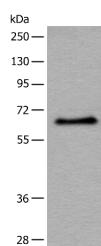


ATF7 Polyclonal Antibody

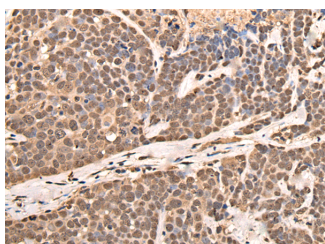
Catalog No.	E-AB-18526	Reactivity	H
Storage	Store at -20°C. Avoid freeze / thaw cycles.	Host	Rabbit
Applications	WB,IHC,ELISA	Isotype	IgG

Note: Centrifuge before opening to ensure complete recovery of vial contents.

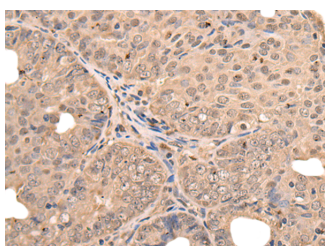
Images



Western blot analysis of HeLa cell lysate using ATF7 Polyclonal Antibody at dilution of 1:500



Immunohistochemistry of paraffin-embedded Human thyroid cancer tissue using ATF7 Polyclonal Antibody at dilution of 1:40(x200)



Immunohistochemistry of paraffin-embedded Human ovarian cancer tissue using ATF7 Polyclonal Antibody at dilution of 1:40(x200)

Immunogen Information

Immunogen	Full length fusion protein
Gene Accession	BC042363
Swissprot	P17544
Synonyms	1110012F10Rik,9430065F09Rik,Transcription factor ATF A,Transcription factor ATF-A

Product Information

Calculated MW	53 kDa
Observed MW	Refer to figures
Buffer	PBS with 0.05% NaN3 and 40% Glycerol,pH7.4
Purify	Antigen affinity purification
Dilution	WB 1:500-1:2000, IHC 1:30-1:150, ELISA 1:5000-1:10000

Background

ATF7 (Activating Transcription Factor 7) is a Protein Coding gene. Diseases associated with ATF7 include Penicilliosis and Familial Atrial Fibrillation. Among its related pathways are ERK Signaling and TCR Signaling (Qiagen). Gene Ontology (GO) annotations related to this gene include nucleic acid binding and sequence-specific DNA binding. An important paralog of this gene is ENSG00000267281.

For Research Use Only

Thank you for your recent purchase.
 If you would like to learn more about antibodies, please visit www.elabscience.com.

**Focus on your research
 Service for life science**

Applications:WB-Western Blot IHC-Immunohistochemistry IF-Immunofluorescence IP-Immunoprecipitation FC-Flow cytometry ChIP-Chromatin Immunoprecipitation Reactivity: H-Human R-Rat M-Mouse Mk-Monkey Dg-Dog Ch-Chicken Hm-Hamster Rb-Rabbit Sh-Sheep Pg-Pig Z-Zebrafish X-Xenopus C-Cow.