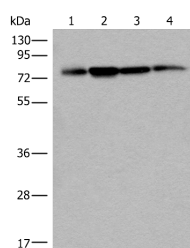


PHF21A Polyclonal Antibody

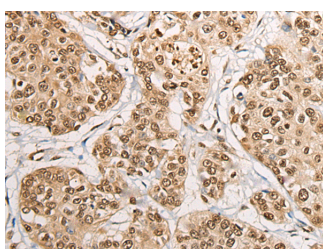
Catalog No.	E-AB-18538	Reactivity	H,M
Storage	Store at -20°C. Avoid freeze / thaw cycles.	Host	Rabbit
Applications	WB,IHC,ELISA	Isotype	IgG

Note: Centrifuge before opening to ensure complete recovery of vial contents.

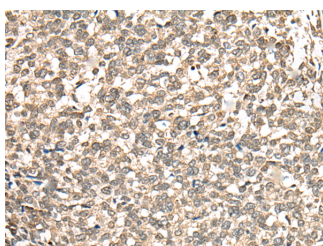
Images



Western blot analysis of 293T HeLa and A375 cell lysates using PHF21A Polyclonal Antibody at dilution of 1:400



Immunohistochemistry of paraffin-embedded Human prostate cancer tissue using PHF21A Polyclonal Antibody at dilution of 1:50(×200)



Immunohistochemistry of paraffin-embedded Human esophagus cancer tissue using PHF21A Polyclonal Antibody at dilution of 1:50(×200)

Immunogen Information

Immunogen	Fusion protein of human PHF21A
Gene Accession	BC015714
Swissprot	Q96BD5
Synonyms	BHC80a,BM-006,BRAF35-HDAC complex protein BHC80,BRAF35/HDAC2 complex (80 kDa),KIAA1696,PF21A,PHD finger protein 21A,PHF21A

Product Information

Calculated MW	75 kDa
Observed MW	Refer to figures
Buffer	PBS with 0.05% NaN ₃ and 40% Glycerol,pH7.4
Purify	Antigen affinity purification
Dilution	WB 1:500-1:2000, IHC 1:40-1:200, ELISA 1:5000-1:10000

Background

Zinc-finger proteins contain DNA-binding domains and have a wide variety of functions, most of which encompass some form of transcriptional activation or repression. PHF21A (PHD finger protein 21A), also known as BRAF35-HDAC complex protein BHC80, is a 680 amino acid nuclear protein that contains one PHD-type zinc finger and one A.T hook DNA-binding domain, suggesting involvement in transcriptional regulation events. PHF21A is a component of the BHC complex, which is responsible for repressing transcription of neuron-specific genes in non-neuronal cells. The BHC complex acts as a chromatin modifier that deacetylates and demethylates specific sites on histones. PHF21A may act as a scaffold within the BHC complex. Predominantly expressed in brain, three isoforms of PHF21A exist as a result of alternative splicing events.

For Research Use Only

Thank you for your recent purchase.
 If you would like to learn more about antibodies, please visit www.elabscience.com.

**Focus on your research
 Service for life science**

Applications:WB-Western Blot IHC-Immunohistochemistry IF-Immunofluorescence IP-Immunoprecipitation FC-Flow cytometry ChIP-Chromatin Immunoprecipitation Reactivity: H-Human R-Rat M-Mouse Mk-Monkey Dg-Dog Ch-Chicken Hm-Hamster Rb-Rabbit Sh-Sheep Pg-Pig Z-Zebrafish X-Xenopus C-Cow.