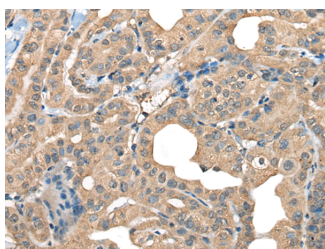


CABP5 Polyclonal Antibody

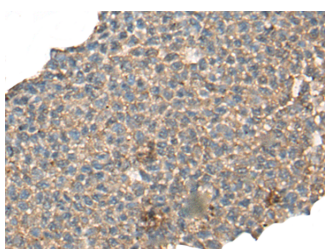
Catalog No.	E-AB-18578	Reactivity	H,M
Storage	Store at -20°C. Avoid freeze / thaw cycles.	Host	Rabbit
Applications	IHC,ELISA	Isotype	IgG

Note: Centrifuge before opening to ensure complete recovery of vial contents.

Images



Immunohistochemistry of paraffin-embedded Human thyroid cancer tissue using CABP5 Polyclonal Antibody at dilution of 1:65(×200)



Immunohistochemistry of paraffin-embedded Human ovarian cancer tissue using CABP5 Polyclonal Antibody at dilution of 1:65(×200)

Immunogen Information

Immunogen	Full length fusion protein
Gene Accession	BC126133
Swissprot	Q9NP86
Synonyms	CABP3,CaBP5,CABP5_HUMAN,Calcium binding protein 3,Calcium-binding protein 5

Product Information

Buffer	PBS with 0.05% NaN ₃ and 40% Glycerol,pH7.4
Purify	Antigen affinity purification
Dilution	IHC 1:50-1:300, ELISA 1:5000-1:10000

Background

The product of this gene belongs to a subfamily of calcium binding proteins, which share similarity to calmodulin. Calcium binding proteins are an important component of calcium mediated cellular signal transduction. Expression of this gene is retina-specific. The mouse homolog of this protein has been shown to express in the inner nuclear layer of the retina, suggested its role in neuronal functioning. The specific function of this gene is unknown.

For Research Use Only

Thank you for your recent purchase.
 If you would like to learn more about antibodies, please visit www.elabscience.com.

**Focus on your research
 Service for life science**

Applications:WB-Western Blot IHC-Immunohistochemistry IF-Immunofluorescence IP-Immunoprecipitation FC-Flow cytometry ChIP-Chromatin Immunoprecipitation Reactivity: H-Human R-Rat M-Mouse Mk-Monkey Dg-Dog Ch-Chicken Hm-Hamster Rb-Rabbit Sh-Sheep Pg-Pig Z-Zebrafish X-Xenopus C-Cow.