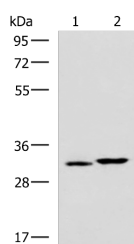


CBR3 Polyclonal Antibody

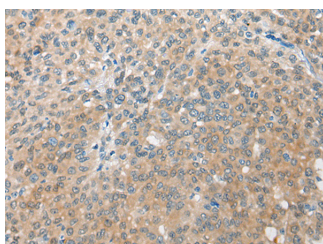
Catalog No.	E-AB-18587	Reactivity	H,M
Storage	Store at -20°C. Avoid freeze / thaw cycles.	Host	Rabbit
Applications	WB,IHC,ELISA	Isotype	IgG

Note: Centrifuge before opening to ensure complete recovery of vial contents.

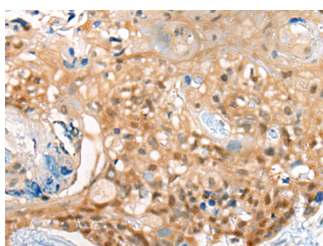
Images



Western blot analysis of 293T cell lysates using CBR3 Polyclonal Antibody at dilution of 1:800



Immunohistochemistry of paraffin-embedded Human liver cancer tissue using CBR3 Polyclonal Antibody at dilution of 1:35(x200)



Immunohistochemistry of paraffin-embedded Human esophagus cancer tissue using CBR3 Polyclonal Antibody at dilution of 1:35(x200)

Immunogen Information

Immunogen	Full length fusion protein
Gene Accession	BC002812
Swissprot	O75828
Synonyms	CBR3,CBR3,SDR21C2,Short chain dehydrogenase/reductase family 21C member 2

Product Information

Calculated MW	31 kDa
Observed MW	Refer to figures
Buffer	PBS with 0.05% NaN ₃ and 40% Glycerol,pH7.4
Purify	Antigen affinity purification
Dilution	WB 1:1000-1:5000, IHC 1:25-1:100, ELISA 1:5000-1:10000

Background

Carbonyl reductase 3 catalyzes the reduction of a large number of biologically and pharmacologically active carbonyl compounds to their corresponding alcohols. The enzyme is classified as a monomeric NADPH-dependent oxidoreductase. CBR3 contains three exons spanning 11.2 kilobases and is closely linked to another carbonyl reductase gene - CBR1.

For Research Use Only

Thank you for your recent purchase.
 If you would like to learn more about antibodies, please visit www.elabscience.com.

Focus on your research
Service for life science

Applications:WB-Western Blot IHC-Immunohistochemistry IF-Immunofluorescence IP-Immunoprecipitation FC-Flow cytometry ChIP-Chromatin Immunoprecipitation Reactivity: H-Human R-Rat M-Mouse Mk-Monkey Dg-Dog Ch-Chicken Hm-Hamster Rb-Rabbit Sh-Sheep Pg-Pig Z-Zebrafish X-Xenopus C-Cow.