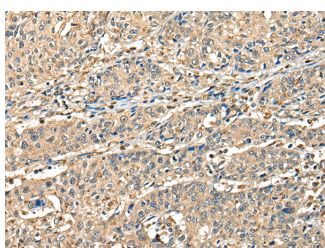


CCDC112 Polyclonal Antibody

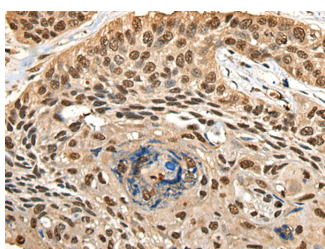
Catalog No.	E-AB-18588	Reactivity	H,M
Storage	Store at -20°C. Avoid freeze / thaw cycles.	Host	Rabbit
Applications	IHC,ELISA	Isotype	IgG

Note: Centrifuge before opening to ensure complete recovery of vial contents.

Images



Immunohistochemistry of paraffin-embedded Human prostate cancer tissue using CCDC112 Polyclonal Antibody at dilution of 1:45 (x200)



Immunohistochemistry of paraffin-embedded Human esophagus cancer tissue using CCDC112 Polyclonal Antibody at dilution of 1:45 (x200)

Immunogen Information

Immunogen	Fusion protein of human CCDC112
Gene Accession	BC031242
Swissprot	Q8NEF3
Synonyms	MBC1,CC112,CCDC112,Mutated in bladder cancer 1,Mutated in bladder cancer protein 1

Product Information

Buffer	PBS with 0.05% NaN ₃ and 40% Glycerol,pH7.4
Purify	Antigen affinity purification
Dilution	IHC 1:40-1:200, ELISA 1:5000-1:10000

Background

CCDC112 (coiled-coil domain containing 112), also known as MBC1 (mutated in bladder cancer 1), is a 446 amino acid protein. The gene encoding CCDC112 is located on chromosome 5. Due to alternative splicing events, CCDC112 exists as two isoforms. Chromosome 5 comprises about 6% of human genomic DNA and contains 181 million base pairs encoding around 1,000 genes. It is associated with Cockayne syndrome through the ERCC8 gene and familial adenomatous polyposis through the adenomatous polyposis coli (APC) tumor suppressor gene. Treacher Collins syndrome is also chromosome 5 associated and is caused by insertions or deletions within the TCOF1 gene. Deletion of the p arm of chromosome 5 leads to Cri du chat syndrome. Deletion of 5q or chromosome 5 altogether is common in therapy-related acute myelogenous leukemias and myelodysplastic syndrome.

For Research Use Only

Thank you for your recent purchase.
 If you would like to learn more about antibodies, please visit www.elabscience.com.

**Focus on your research
 Service for life science**

Applications:WB-Western Blot IHC-Immunohistochemistry IF-Immunofluorescence IP-Immunoprecipitation FC-Flow cytometry ChIP-Chromatin Immunoprecipitation Reactivity: H-Human R-Rat M-Mouse Mk-Monkey Dg-Dog Ch-Chicken Hm-Hamster Rb-Rabbit Sh-Sheep Pg-Pig Z-Zebrafish X-Xenopus C-Cow.