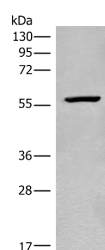


CDADC1 Polyclonal Antibody

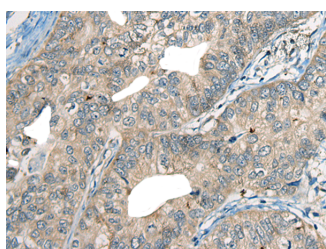
Catalog No.	E-AB-18595	Reactivity	H,M
Storage	Store at -20°C. Avoid freeze / thaw cycles.	Host	Rabbit
Applications	WB,IHC,ELISA	Isotype	IgG

Note: Centrifuge before opening to ensure complete recovery of vial contents.

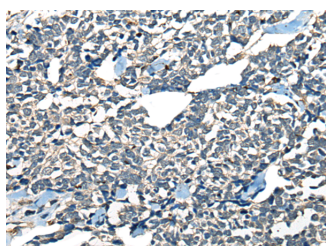
Images



Western blot analysis of Mouse heart tissue lysate using CDADC1 Polyclonal Antibody at dilution of 1:450



Immunohistochemistry of paraffin-embedded Human gastric cancer tissue using CDADC1 Polyclonal Antibody at dilution of 1:60(x200)



Immunohistochemistry of paraffin-embedded Human lung cancer tissue using CDADC1 Polyclonal Antibody at dilution of 1:60(x200)

Immunogen Information

Immunogen	Full length fusion protein
Gene Accession	BC009562
Swissprot	Q9BWV3
Synonyms	bA103J18.1,CDAC1,Testis development protein NYD-SP15

Product Information

Calculated MW	58 kDa
Observed MW	Refer to figures
Buffer	PBS with 0.05% NaN ₃ and 40% Glycerol,pH7.4
Purify	Antigen affinity purification
Dilution	WB 1:500-1:2000, IHC 1:50-1:300, ELISA 1:5000-1:10000

Background

NYD-SP15 (testis development protein NYD-SP15), also known as CDADC1 (cytidine and dCMP deaminase domain containing 1), is a widely expressed protein with predominant expression in the testis, liver, spleen, kidney, thymus and placenta. NYD-SP15 is 514 amino acids in length and belongs to the cytidine and deoxycytidylate deaminase family. It is developmentally regulated with higher expression in adult testis than fetal testis and is believed to participate in spermatogenesis and testicular development. This suggests that NYD-SP15 may be a determining factor in male infertility. Due to alternative splicing events, four transcript variants exist for NYD-SP15.

For Research Use Only

Thank you for your recent purchase.
 If you would like to learn more about antibodies, please visit www.elabscience.com.

**Focus on your research
 Service for life science**

Applications:WB-Western Blot IHC-Immunohistochemistry IF-Immunofluorescence IP-Immunoprecipitation FC-Flow cytometry ChIP-Chromatin Immunoprecipitation Reactivity: H-Human R-Rat M-Mouse Mk-Monkey Dg-Dog Ch-Chicken Hm-Hamster Rb-Rabbit Sh-Sheep Pg-Pig Z-Zebrafish X-Xenopus C-Cow.