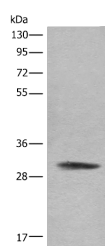


## COMT Polyclonal Antibody

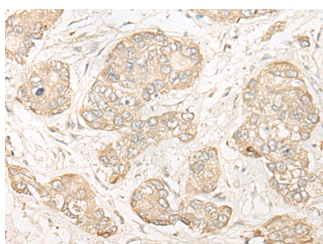
<b>Catalog No.</b>	E-AB-18624	<b>Reactivity</b>	H
<b>Storage</b>	Store at -20°C. Avoid freeze / thaw cycles.	<b>Host</b>	Rabbit
<b>Applications</b>	WB,IHC,ELISA	<b>Isotype</b>	IgG

**Note:** Centrifuge before opening to ensure complete recovery of vial contents.

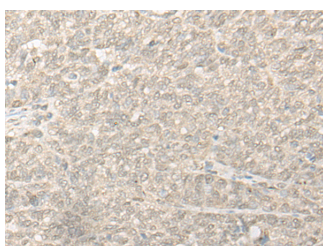
### Images



Western blot analysis of HeLa cell lysate using COMT Polyclonal Antibody at dilution of 1:450



Immunohistochemistry of paraffin-embedded Human liver cancer tissue using COMT Polyclonal Antibody at dilution of 1:30(x200)



Immunohistochemistry of paraffin-embedded Human ovarian cancer tissue using COMT Polyclonal Antibody at dilution of 1:30(x200)

### Immunogen Information

<b>Immunogen</b>	Fusion protein of human COMT
<b>Gene Accession</b>	BC011935
<b>Swissprot</b>	P21964
<b>Synonyms</b>	Catechol O methyltransferase,Catechol O-methyltransferase,COMT,COMT,EC 2.1.1.6

### Product Information

<b>Calculated MW</b>	30 kDa
<b>Observed MW</b>	Refer to figures
<b>Buffer</b>	PBS with 0.05% NaN <sub>3</sub> and 40% Glycerol,pH7.4
<b>Purify</b>	Antigen affinity purification
<b>Dilution</b>	WB 1:500-1:2000, IHC 1:25-1:100, ELISA 1:5000-1:10000

### Background

Catechol-O-methyltransferase catalyzes the transfer of a methyl group from S-adenosylmethionine to catecholamines, including the neurotransmitters dopamine, epinephrine, and norepinephrine. This O-methylation results in one of the major degradative pathways of the catecholamine transmitters. In addition to its role in the metabolism of endogenous substances, COMT is important in the metabolism of catechol drugs used in the treatment of hypertension, asthma, and Parkinson disease. COMT is found in two forms in tissues, a soluble form (S-COMT) and a membrane-bound form (MB-COMT). The differences between S-COMT and MB-COMT reside within the N-termini. Several transcript variants are formed through the use of alternative translation initiation sites and promoters.

#### For Research Use Only

Thank you for your recent purchase.  
 If you would like to learn more about antibodies, please visit [www.elabscience.com](http://www.elabscience.com).

**Focus on your research**  
**Service for life science**

Applications:WB-Western Blot IHC-Immunohistochemistry IF-Immunofluorescence IP-Immunoprecipitation FC-Flow cytometry ChIP-Chromatin Immunoprecipitation Reactivity: H-Human R-Rat M-Mouse Mk-Monkey Dg-Dog Ch-Chicken Hm-Hamster Rb-Rabbit Sh-Sheep Pg-Pig Z-Zebrafish X-Xenopus C-Cow.