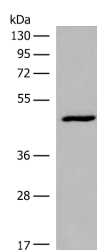


DCP2 Polyclonal Antibody

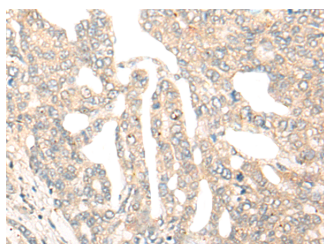
Catalog No.	E-AB-18644	Reactivity	H,M
Storage	Store at -20°C. Avoid freeze / thaw cycles.	Host	Rabbit
Applications	WB,IHC,ELISA	Isotype	IgG

Note: Centrifuge before opening to ensure complete recovery of vial contents.

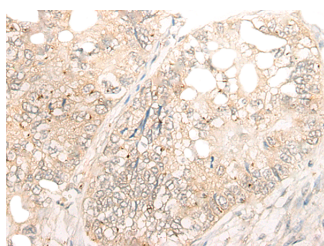
Images



Western blot analysis of HL-60 cell lysate using DCP2 Polyclonal Antibody at dilution of 1:500



Immunohistochemistry of paraffin-embedded Human liver cancer tissue using DCP2 Polyclonal Antibody at dilution of 1:45(x200)



Immunohistochemistry of paraffin-embedded Human gastric cancer tissue using DCP2 Polyclonal Antibody at dilution of 1:45(x200)

Immunogen Information

Immunogen	Fusion protein of human DCP2
Gene Accession	BC064593
Swissprot	Q8IU60
Synonyms	DCP2,DCP2 decapping enzyme homolog (S. cerevisiae),DCP2,NUDT20

Product Information

Calculated MW	48 kDa
Observed MW	Refer to figures
Buffer	PBS with 0.05% NaN ₃ and 40% Glycerol,pH7.4
Purify	Antigen affinity purification
Dilution	WB 1:500-1:2000, IHC 1:30-1:150, ELISA 1:5000-1:10000

Background

The protein encoded by this gene is a key component of an mRNA-decapping complex required for degradation of mRNAs, both in normal mRNA turnover, and in nonsense-mediated mRNA decay (NMD). It removes the 7-methyl guanine cap structure from mRNA, prior to its degradation from the 5' end. Alternatively spliced transcript variants encoding different isoforms have been noted for this gene.

For Research Use Only

Thank you for your recent purchase.
 If you would like to learn more about antibodies, please visit www.elabscience.com.

Focus on your research
Service for life science

Applications:WB-Western Blot IHC-Immunohistochemistry IF-Immunofluorescence IP-Immunoprecipitation FC-Flow cytometry ChIP-Chromatin Immunoprecipitation Reactivity: H-Human R-Rat M-Mouse Mk-Monkey Dg-Dog Ch-Chicken Hm-Hamster Rb-Rabbit Sh-Sheep Pg-Pig Z-Zebrafish X-Xenopus C-Cow.