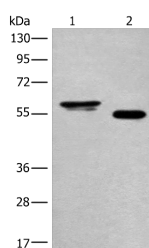


## HAS3 Polyclonal Antibody

|                     |   |                   |        |
|---------------------|---|-------------------|--------|
| <b>Catalog No.</b>  | E-AB-18670                                  | <b>Reactivity</b> | H,M    |
| <b>Storage</b>      | Store at -20°C. Avoid freeze / thaw cycles. | <b>Host</b>       | Rabbit |
| <b>Applications</b> | WB,ELISA                                    | <b>Isotype</b>    | IgG    |

**Note:** Centrifuge before opening to ensure complete recovery of vial contents.

### Images



Western blot analysis of Human cervical cancer tissue and A549 cell lysates using HAS3 Polyclonal Antibody at dilution of 1:400

### Immunogen Information

|                       |   |
|-----------------------|---|
| <b>Immunogen</b>      | Fusion protein of human HAS3  |
| <b>Gene Accession</b> | BC021853  |
| <b>Swissprot</b>      | O00219  |
| <b>Synonyms</b>       | HA synthase 3,Has3,HAS3,Hyaluronan synthase 3,Hyaluronate synthase 3,Hyaluronic acid synthase 3 |

### Product Information

|                      |  |
|----------------------|--|
| <b>Calculated MW</b> | 63 kDa   |
| <b>Observed MW</b>   | Refer to figures                                       |
| <b>Buffer</b>        | PBS with 0.05% NaN <sub>3</sub> and 40% Glycerol,pH7.4 |
| <b>Purify</b>        | Antigen affinity purification                          |
| <b>Dilution</b>      | WB 1:500-1:2000, ELISA 1:5000-1:10000                  |

### Background

The protein encoded by this gene is involved in the synthesis of the unbranched glycosaminoglycan hyaluronan, or hyaluronic acid, which is a major constituent of the extracellular matrix. This gene is a member of the NODC/HAS gene family. Compared to the proteins encoded by other members of this gene family, this protein appears to be more of a regulator of hyaluronan synthesis. Alternative splicing results in multiple transcript variants.

#### For Research Use Only

Thank you for your recent purchase.  
 If you would like to learn more about antibodies, please visit [www.elabscience.com](http://www.elabscience.com).

**Focus on your research  
 Service for life science**

Applications:WB-Western Blot IHC-Immunohistochemistry IF-Immunofluorescence IP-Immunoprecipitation FC-Flow cytometry ChIP-Chromatin Immunoprecipitation Reactivity: H-Human R-Rat M-Mouse Mk-Monkey Dg-Dog Ch-Chicken Hm-Hamster Rb-Rabbit Sh-Sheep Pg-Pig Z-Zebrafish X-Xenopus C-Cow.