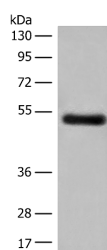


GK5 Polyclonal Antibody

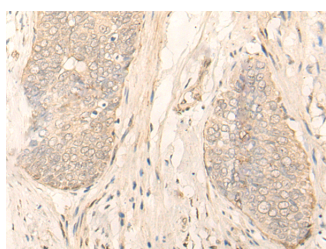
Catalog No.	E-AB-18674	Reactivity	H
Storage	Store at -20°C. Avoid freeze / thaw cycles.	Host	Rabbit
Applications	WB,IHC,ELISA	Isotype	IgG

Note: Centrifuge before opening to ensure complete recovery of vial contents.

Images



Western blot analysis of Human breast cancer tissue lysate using GK5 Polyclonal Antibody at dilution of 1:500



Immunohistochemistry of paraffin-embedded Human esophagus cancer tissue using GK5 Polyclonal Antibody at dilution of 1:35(x200)

Immunogen Information

Immunogen	Full length fusion protein
Gene Accession	BC032470
Swissprot	Q6ZS86
Synonyms	ATP:glycerol 3-phosphotransferase 5,FLJ33582,FLJ45739,GK 5,gk5,GLPK5,Glycerokinase 5,glycerol kinase 5 (putative),MGC40579,Putative glycerol kinase 5

Product Information

Calculated MW	59 kDa
Observed MW	Refer to figures
Buffer	PBS with 0.05% NaN ₃ and 40% Glycerol,pH7.4
Purify	Antigen affinity purification
Dilution	WB 1:500-1:2000, IHC 1:30-1:150, ELISA 1:5000-1:10000

Background

GK5(Putative glycerol kinase 5) is also named as ATP:glycerol 3-phosphotransferase 5 and belongs to the FGGY kinase family.It is involved in Glycerol metabolism and catalyzes the phosphorylation of glycerol by ATP, yielding ADP and glycerol-3-phosphate.It has 3 isoforms produced by alternative splicing with the MW of 59 kDa, 34 kDa and 28 kDa.

For Research Use Only

Thank you for your recent purchase.
 If you would like to learn more about antibodies,please visit www.elabscience.com.

Focus on your research Service for life science

Applications:WB-Western Blot IHC-Immunohistochemistry IF-Immunofluorescence IP-Immunoprecipitation FC-Flow cytometry ChIP-Chromatin Immunoprecipitation Reactivity: H-Human R-Rat M-Mouse Mk-Monkey Dg-Dog Ch-Chicken Hm-Hamster Rb-Rabbit Sh-Sheep Pg-Pig Z-Zebrafish X-Xenopus C-Cow.