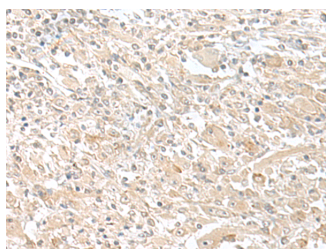


SMS Polyclonal Antibody

Catalog No.	E-AB-18693	Reactivity	H,M
Storage	Store at -20°C. Avoid freeze / thaw cycles.	Host	Rabbit
Applications	IHC,ELISA	Isotype	IgG

Note: Centrifuge before opening to ensure complete recovery of vial contents.

Images



Immunohistochemistry of paraffin-embedded Human liver cancer tissue using SMS Polyclonal Antibody at dilution of 1:50(×200)

Immunogen Information

Immunogen	Fusion protein of human SMS
Gene Accession	BC009898
Swissprot	P52788
Synonyms	MRSR,SMS,Snyder Robinson X linked mental retardation syndrome,Spermidine aminopropyltransferase,Spermine synthase,SPMSY,SpS,SPSY,SRS

Product Information

Buffer	PBS with 0.05% NaN ₃ and 40% Glycerol,pH7.4
Purify	Antigen affinity purification
Dilution	IHC 1:40-1:200, ELISA 1:5000-1:10000

Background

This gene encodes a protein belonging to the spermidine/spermin synthase family. Pseudogenes of this gene are located on chromosomes 1, 5, 6 and X. Mutations in this gene are associated with X-linked Snyder-Robinson mental retardation syndrome. Multiple transcript variants encoding different isoforms have been found for this gene.

For Research Use Only

Thank you for your recent purchase.
 If you would like to learn more about antibodies, please visit www.elabscience.com.

**Focus on your research
 Service for life science**

Applications:WB-Western Blot IHC-Immunohistochemistry IF-Immunofluorescence IP-Immunoprecipitation FC-Flow cytometry ChIP-Chromatin Immunoprecipitation Reactivity: H-Human R-Rat M-Mouse Mk-Monkey Dg-Dog Ch-Chicken Hm-Hamster Rb-Rabbit Sh-Sheep Pg-Pig Z-Zebrafish X-Xenopus C-Cow.