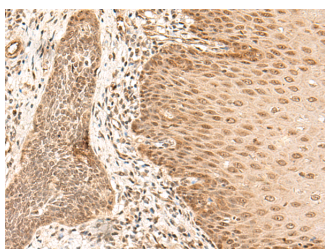


ARMC8 Polyclonal Antibody

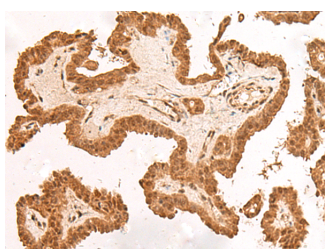
Catalog No.	E-AB-18698	Reactivity	H,M
Storage	Store at -20°C. Avoid freeze / thaw cycles.	Host	Rabbit
Applications	IHC,ELISA	Isotype	IgG

Note: Centrifuge before opening to ensure complete recovery of vial contents.

Images



Immunohistochemistry of paraffin-embedded Human esophagus cancer tissue using ARMC8 Polyclonal Antibody at dilution of 1:40(×200)



Immunohistochemistry of paraffin-embedded Human thyroid cancer tissue using ARMC8 Polyclonal Antibody at dilution of 1:40(×200)

Immunogen Information

Immunogen	Fusion protein of human ARMC8
Gene Accession	BC013424
Swissprot	Q8IUR7
Synonyms	Armadillo repeat containing protein 8,Armadillo repeat-containing protein 8,ARMC8,ARMC8,HSPC056,MGC10058,MGC4880,S863 2

Product Information

Buffer	PBS with 0.05% NaN ₃ and 40% Glycerol,pH7.4
Purify	Antigen affinity purification
Dilution	IHC 1:40-1:200, ELISA 1:5000-1:10000

Background

The armadillo (ARM) repeat family of proteins are related to the *Drosophila melanogaster* armadillo protein, a protein essential for wingless signal transduction. ARM proteins are involved in a variety of processes such as cell migration, cell proliferation, tissue maintenance and tumorigenesis, and they also function in signal transduction and the maintenance of overall cell structure. ARMC8 (armadillo repeat containing 8), also known as S863-2, is a 673 amino acid protein that contains 14 ARM repeats, suggesting a role in signal transduction events throughout the cell. Six isoforms of ARMC8 are expressed due to alternative splicing events. The gene encoding ARMC8 maps to human chromosome 3, which houses over 1,100 genes, including a chemokine receptor (CKR) gene cluster and a variety of human cancer-related gene loci.

For Research Use Only

Thank you for your recent purchase.
 If you would like to learn more about antibodies, please visit www.elabscience.com.

**Focus on your research
 Service for life science**

Applications:WB-Western Blot IHC-Immunohistochemistry IF-Immunofluorescence IP-Immunoprecipitation FC-Flow cytometry ChIP-Chromatin Immunoprecipitation Reactivity: H-Human R-Rat M-Mouse Mk-Monkey Dg-Dog Ch-Chicken Hm-Hamster Rb-Rabbit Sh-Sheep Pg-Pig Z-Zebrafish X-Xenopus C-Cow.