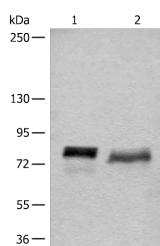


BCAS3 Polyclonal Antibody

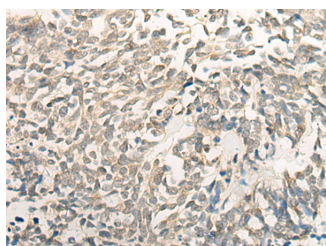
Catalog No.	E-AB-18703	Reactivity	H,M
Storage	Store at -20°C. Avoid freeze / thaw cycles.	Host	Rabbit
Applications	WB,IHC,ELISA	Isotype	IgG

Note: Centrifuge before opening to ensure complete recovery of vial contents.

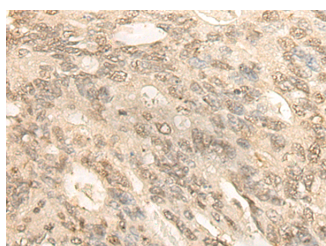
Images



Western blot analysis of 293T cell lysates using BCAS3 Polyclonal Antibody at dilution of 1:500



Immunohistochemistry of paraffin-embedded Human lung cancer tissue using BCAS3 Polyclonal Antibody at dilution of 1:35(×200)



Immunohistochemistry of paraffin-embedded Human colorectal cancer tissue using BCAS3 Polyclonal Antibody at dilution of 1:35(×200)

Immunogen Information

Immunogen	Fusion protein of human BCAS3
Gene Accession	BC001250
Swissprot	Q9H6U6
Synonyms	AU021018,BC028339,BCAS3,FLJ20128,GAOB1,K2OD4,MAAB,Maab1 protein,MGC4973,rudhira

Product Information

Calculated MW	101 kDa
Observed MW	Refer to figures
Buffer	PBS with 0.05% NaN ₃ and 40% Glycerol,pH7.4
Purify	Antigen affinity purification
Dilution	WB 1:500-1:2000, IHC 1:30-1:150, ELISA 1:5000-1:10000

Background

BCAS3 (breast carcinoma amplified sequence 3), also designated MAAB or GAOB1, is a 913 amino acid protein that is believed to be involved in breast cancer progression. The gene is regulated by ER α (estrogen receptor alpha) and expressed in multiple tissues, including malignant human brain lesions. It is overexpressed and amplified in breast cancer cell lines. BCAS3 contains three WD40 repeat regions, a bromodomain, a rare zinc-finger motif, four probable DNA-binding domains, and two kinase-inducible phosphorylation domains. Five variants are produced due to alternative splicing. BCAS3 interacts with histone H3 and PCAF, which is indicative of histone acetyltransferase activity. BCAS3 also exhibits ER α transactivation activity by acting as a coactivator with PELP1 or MTA1. The amplification and translocation between the BCAS3 gene and the BCAS4 gene results in a fusion transcript is overexpressed in MCF-7 cells.

For Research Use Only

Thank you for your recent purchase.
 If you would like to learn more about antibodies, please visit www.elabscience.com.

Focus on your research
Service for life science

Applications:WB-Western Blot IHC-Immunohistochemistry IF-Immunofluorescence IP-Immunoprecipitation FC-Flow cytometry ChIP-Chromatin Immunoprecipitation Reactivity: H-Human R-Rat M-Mouse Mk-Monkey Dg-Dog Ch-Chicken Hm-Hamster Rb-Rabbit Sh-Sheep Pg-Pig Z-Zebrafish X-Xenopus C-Cow.