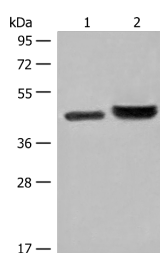


## INPP1 Polyclonal Antibody

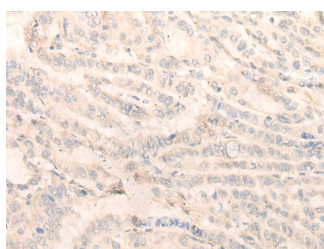
<b>Catalog No.</b>	E-AB-18708	<b>Reactivity</b>	H
<b>Storage</b>	Store at -20°C. Avoid freeze / thaw cycles.	<b>Host</b>	Rabbit
<b>Applications</b>	WB,IHC,ELISA	<b>Isotype</b>	IgG

**Note:** Centrifuge before opening to ensure complete recovery of vial contents.

### Images



Western blot analysis of 231 cell and Human fetal liver tissue lysates using INPP1 Polyclonal Antibody at dilution of 1:500



Immunohistochemistry of paraffin-embedded Human thyroid cancer tissue using INPP1 Polyclonal Antibody at dilution of 1:35(×200)

### Immunogen Information

<b>Immunogen</b>	Fusion protein of human INPP1
<b>Gene Accession</b>	BC015496
<b>Swissprot</b>	P49441
<b>Synonyms</b>	EC 3.1.3.57 ,Inositol polyphosphate 1 phosphatase,Inositol polyphosphate 1-phosphatase,INPP,INPP1,IPP,IPPase

### Product Information

<b>Calculated MW</b>	44 kDa
<b>Observed MW</b>	Refer to figures
<b>Buffer</b>	PBS with 0.05% NaN <sub>3</sub> and 40% Glycerol,pH7.4
<b>Purify</b>	Antigen affinity purification
<b>Dilution</b>	WB 1:500-1:2000, IHC 1:40-1:200, ELISA 1:5000-1:10000

### Background

This gene encodes the enzyme inositol polyphosphate-1-phosphatase, one of the enzymes involved in phosphatidylinositol signaling pathways. This enzyme removes the phosphate group at position 1 of the inositol ring from the polyphosphates inositol 1,4-bisphosphate and inositol 1,3,4-trisphosphate.

#### For Research Use Only

Thank you for your recent purchase.  
 If you would like to learn more about antibodies, please visit [www.elabscience.com](http://www.elabscience.com).

**Focus on your research  
 Service for life science**

Applications:WB-Western Blot IHC-Immunohistochemistry IF-Immunofluorescence IP-Immunoprecipitation FC-Flow cytometry ChIP-Chromatin Immunoprecipitation Reactivity: H-Human R-Rat M-Mouse Mk-Monkey Dg-Dog Ch-Chicken Hm-Hamster Rb-Rabbit Sh-Sheep Pg-Pig Z-Zebrafish X-Xenopus C-Cow.