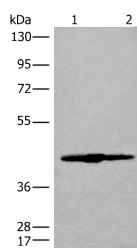


IVD Polyclonal Antibody

Catalog No.	E-AB-18718	Reactivity	H,M,R
Storage	Store at -20°C. Avoid freeze / thaw cycles.	Host	Rabbit
Applications	WB,ELISA	Isotype	IgG

Note: Centrifuge before opening to ensure complete recovery of vial contents.

Images



Western blot analysis of 293T cell lysate using IVD Polyclonal Antibody at dilution of 1:500

Immunogen Information

Immunogen	Fusion protein of human IVD
Gene Accession	BC017202
Swissprot	P26440
Synonyms	ACAD2,FLJ12715,FLJ34849,Isovaleryl-CoA dehydrogenase,IVD,IVD,mitochondrial

Product Information

Calculated MW	46 kDa
Observed MW	Refer to figures
Buffer	PBS with 0.05% NaN ₃ and 40% Glycerol,pH7.4
Purify	Antigen affinity purification
Dilution	WB 1:500-1:2000, ELISA 1:5000-1:10000

Background

IVD(Isovaleryl CoA dehydrogenase,mitochondrial) is a member of the acylCoA dehydrogenase family and is involved in the catabolism of leucine. In size,IVD precursor and mature proteins produced by class I mutants are indistinguishable from their normal counterparts. Class II,III,and IV mutants make IVD precursor proteins 42 kD in size rather than the normal 45 kD. It has 2 isoforms produced by alternative splicing.

For Research Use Only

Thank you for your recent purchase.

If you would like to learn more about antibodies,please visit www.elabscience.com.

**Focus on your research
 Service for life science**

Applications:WB-Western Blot IHC-Immunohistochemistry IF-Immunofluorescence IP-Immunoprecipitation FC-Flow cytometry ChIP-Chromatin Immunoprecipitation Reactivity: H-Human R-Rat M-Mouse Mk-Monkey Dg-Dog Ch-Chicken Hm-Hamster Rb-Rabbit Sh-Sheep Pg-Pig Z-Zebrafish X-Xenopus C-Cow.