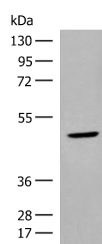


ZBTB8A Polyclonal Antibody

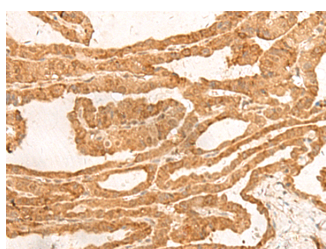
Catalog No.	E-AB-18720	Reactivity	H,M,R
Storage	Store at -20°C. Avoid freeze / thaw cycles.	Host	Rabbit
Applications	WB,IHC,ELISA	Isotype	IgG

Note: Centrifuge before opening to ensure complete recovery of vial contents.

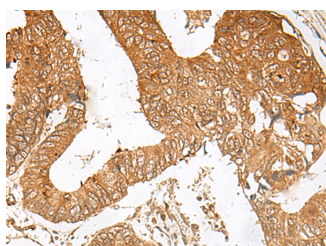
Images



Western blot analysis of Human thyroid tissue lysate using ZBTB8A Polyclonal Antibody at dilution of 1:350



Immunohistochemistry of paraffin-embedded Human thyroid cancer tissue using ZBTB8A Polyclonal Antibody at dilution of 1:100(x200)



Immunohistochemistry of paraffin-embedded Human colorectal cancer tissue using ZBTB8A Polyclonal Antibody at dilution of 1:100(x200)

Immunogen Information

Immunogen	Fusion protein of human ZBTB8A
Gene Accession	BC015239
Swissprot	Q96BR9
Synonyms	BOZF1,ZBT8A,Zbtb8a,Zinc finger and BTB domain-containing protein 8A

Product Information

Calculated MW	50 kDa
Observed MW	Refer to figures
Buffer	PBS with 0.05% NaN3 and 40% Glycerol,pH7.4
Purify	Antigen affinity purification
Dilution	WB 1:500-1:2000, IHC 1:50-1:300, ELISA 1:5000-1:10000

Background

May be involved in transcriptional regulation.

For Research Use Only

Thank you for your recent purchase.
 If you would like to learn more about antibodies, please visit www.elabscience.com.

**Focus on your research
 Service for life science**

Applications:WB-Western Blot IHC-Immunohistochemistry IF-Immunofluorescence IP-Immunoprecipitation FC-Flow cytometry ChIP-Chromatin Immunoprecipitation Reactivity: H-Human R-Rat M-Mouse Mk-Monkey Dg-Dog Ch-Chicken Hm-Hamster Rb-Rabbit Sh-Sheep Pg-Pig Z-Zebrafish X-Xenopus C-Cow.