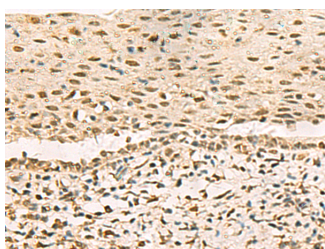


GRWD1 Polyclonal Antibody

Catalog No.	E-AB-18721	Reactivity	H,M,R
Storage	Store at -20°C. Avoid freeze / thaw cycles.	Host	Rabbit
Applications	IHC,ELISA	Isotype	IgG

Note: Centrifuge before opening to ensure complete recovery of vial contents.

Images



Immunohistochemistry of paraffin-embedded Human cervical cancer tissue using GRWD1 Polyclonal Antibody at dilution of 1:90(×200)

Immunogen Information

Immunogen	Fusion protein of human GRWD1
Gene Accession	BC002440
Swissprot	Q9BQ67
Synonyms	CDW4,GRWD 1,GRWD,grwd1,GRWD1,KIAA1942, METTL18,RRB1,WD repeat domain 28,WDR 28,WDR28

Product Information

Buffer	PBS with 0.05% NaN ₃ and 40% Glycerol,pH7.4
Purify	Antigen affinity purification
Dilution	IHC 1:50-1:200, ELISA 1:5000-1:10000

Background

This gene encodes a glutamate-rich protein that contains five WD-repeat motifs. The encoded protein may play a critical role in ribosome biogenesis and may also play a role in histone methylation through interactions with CUL4-DDB1 ubiquitin E3 ligase.

For Research Use Only

Thank you for your recent purchase.
 If you would like to learn more about antibodies, please visit www.elabscience.com.

**Focus on your research
 Service for life science**

Applications:WB-Western Blot IHC-Immunohistochemistry IF-Immunofluorescence IP-Immunoprecipitation FC-Flow cytometry ChIP-Chromatin Immunoprecipitation Reactivity: H-Human R-Rat M-Mouse Mk-Monkey Dg-Dog Ch-Chicken Hm-Hamster Rb-Rabbit Sh-Sheep Pg-Pig Z-Zebrafish X-Xenopus C-Cow.