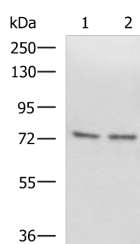


SCMH1 Polyclonal Antibody

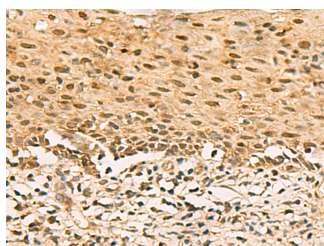
Catalog No.	E-AB-18741	Reactivity	H,M
Storage	Store at -20°C. Avoid freeze / thaw cycles.	Host	Rabbit
Applications	WB,IHC,ELISA	Isotype	IgG

Note: Centrifuge before opening to ensure complete recovery of vial contents.

Images



Western blot analysis of Raji and 231 cell lysates using SCMHI Polyclonal Antibody at dilution of 1:1000



Immunohistochemistry of paraffin-embedded Human cervical cancer tissue using SCMHI Polyclonal Antibody at dilution of 1:120(×200)

Immunogen Information

Immunogen	Fusion protein of human SCMHI
Gene Accession	BC009752
Swissprot	Q96GD3
Synonyms	Polycomb protein SCMHI,SCMH1,SCMH1,Scml 3,Scml3,Sex comb on midleg 1,Sex comb on midleg homolog 1

Product Information

Calculated MW	73 kDa
Observed MW	Refer to figures
Buffer	PBS with 0.05% NaN ₃ and 40% Glycerol,pH7.4
Purify	Antigen affinity purification
Dilution	WB 1:500-1:2000, IHC 1:100-1:300, ELISA 1:5000-1:10000

Background

Associates with Polycomb group (PcG) multiprotein complexes; the complex class is required to maintain the transcriptionally repressive state of some genes.

For Research Use Only

Thank you for your recent purchase.
 If you would like to learn more about antibodies, please visit www.elabscience.com.

**Focus on your research
 Service for life science**

Applications:WB-Western Blot IHC-Immunohistochemistry IF-Immunofluorescence IP-Immunoprecipitation FC-Flow cytometry ChIP-Chromatin Immunoprecipitation Reactivity: H-Human R-Rat M-Mouse Mk-Monkey Dg-Dog Ch-Chicken Hm-Hamster Rb-Rabbit Sh-Sheep Pg-Pig Z-Zebrafish X-Xenopus C-Cow.