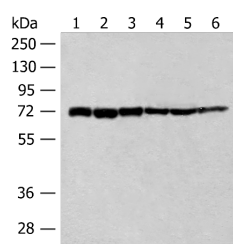


TCF25 Polyclonal Antibody

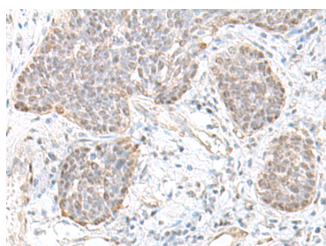
Catalog No.	E-AB-18744	Reactivity	H,M
Storage	Store at -20°C. Avoid freeze / thaw cycles.	Host	Rabbit
Applications	WB,IHC,ELISA	Isotype	IgG

Note: Centrifuge before opening to ensure complete recovery of vial contents.

Images



Western blot analysis of 293T cell
 Human fetal brain tissue Jurkat cell
 Hela cell Mouse heart tissue lysates
 using TCF25 Polyclonal Antibody at
 dilution of 1:250



Immunohistochemistry of paraffin-
 embedded Human esophagus cancer
 tissue using TCF25 Polyclonal
 Antibody at dilution of 1:35(×200)

Immunogen Information

Immunogen	Fusion protein of human TCF25
Gene Accession	BC009349
Swissprot	Q9BQ70
Synonyms	FKSG26,hKIAA1049,Hulp1,Nuclear localized protein 1,NULP1,PRO2620,TCF-25,Tcf25

Product Information

Calculated MW	77 kDa
Observed MW	Refer to figures
Buffer	PBS with 0.05% NaN ₃ and 40% Glycerol,pH7.4
Purify	Antigen affinity purification
Dilution	WB 1:500-1:2000, IHC 1:30-1:150, ELISA 1:5000-1:10000

Background

May play a role in cell death control. Acts as a transcriptional repressor. Has been shown to repress transcription of SRF in vitro and so may play a role in heart development.

For Research Use Only

Thank you for your recent purchase.
 If you would like to learn more about antibodies, please visit www.elabscience.com.

**Focus on your research
 Service for life science**

Applications:WB-Western Blot IHC-Immunohistochemistry IF-Immunofluorescence IP-Immunoprecipitation FC-Flow cytometry ChIP-Chromatin Immunoprecipitation Reactivity: H-Human R-Rat M-Mouse Mk-Monkey Dg-Dog Ch-Chicken Hm-Hamster Rb-Rabbit Sh-Sheep Pg-Pig Z-Zebrafish X-Xenopus C-Cow.